

# 2010 ANNUAL REPORT



## COURT OF COMMON PLEAS GENERAL DIVISION SUMMIT COUNTY OHIO

---

---

**PATRICIA A. COSGROVE**  
ADMINISTRATIVE JUDGE

**THOMAS A. TEODOSIO**  
PRESIDING JUDGE

**JUDGE LYNNE S. CALLAHAN**  
**JUDGE PAUL J. GALLAGHER**  
**JUDGE JUDY HUNTER**  
**JUDGE ALISON McCARTY**

**JUDGE TOM PARKER**  
**JUDGE MARY MARGARET ROWLANDS**  
**JUDGE ELINORE MARSH STORMER**  
**JUDGE BRENDA BURNHAM UNRUH**

**ANDREW J. BAUER**  
COURT EXECUTIVE OFFICER

# TABLE OF CONTENTS

	PAGE
<u>MISSION STATEMENT</u> .....	1
<u>JUDGES OF THE COURT OF COMMON PLEAS, GENERAL DIVISION</u> .....	2
<u>CIVIL DIVISION CASE ACTIVITY/SUPREME COURT ANNUAL REPORT 2010</u> .....	12
<u>CIVIL DIVISION FILINGS/TERMINATIONS FIVE-YEAR COMPARISON</u> .....	13
<u>CIVIL DIVISION FILINGS/TERMINATIONS 2010 MONTHLY COMPARISON</u> .....	13
<u>CRIMINAL DIVISION CASE ACTIVITY 2010</u> .....	14
<u>CRIMINAL DIVISION FILINGS/ARRAIGNMENTS/TERMINATIONS FIVE YEAR COMPARISON</u> .....	16
<u>VISITING JUDGES</u> .....	17
<u>MEDIATION</u> .....	18
<u>MAGISTRATE</u> .....	19
<u>FELONY DRUG COURT</u> .....	20
<u>ADULT PROBATION DEPARTMENT</u> .....	22
<u>PRETRIAL SERVICES</u> .....	33
<u>PSYCHO-DIAGNOSTIC CLINIC</u> .....	35
<u>JURY MANAGEMENT</u> .....	38
<u>COURT SECURITY</u> .....	40
<u>COURT OF COMMON PLEAS 2010 FINANCIAL INFORMATION</u> .....	42
<u>PERSONNEL ROSTER</u> .....	44
<u>DEPARTMENTAL / GROUP PHOTOS OF PERSONNEL</u> .....	49

**SUMMIT COUNTY COURT OF COMMON PLEAS  
GENERAL DIVISION**

**MISSION STATEMENT**

THE MISSION OF THE SUMMIT COUNTY COURT OF COMMON PLEAS GENERAL DIVISION IS TO INSURE JUSTICE, THEREBY SERVING AND PROTECTING THE PUBLIC BY:

- ◆ Providing access to fair, just and understandable forums for the timely resolution of differences and disputes;
- ◆ Applying and enforcing all laws in a timely and equitable manner; and
- ◆ Taking appropriate corrective, remedial, rehabilitative and preventive actions and using appropriate progressive programs.

THE VISION OF THE SUMMIT COUNTY COURT OF COMMON PLEAS GENERAL DIVISION WILL PROVIDE THE HIGHEST QUALITY OF JUSTICE AND JUSTICE SYSTEM SERVICES TO SUMMIT COUNTY COMMUNITIES BY:

- ◆ Promoting cooperation among the courts, justice system and other community agencies and services;
- ◆ Initiating and implementing programs and policies designed to encourage ethical standards, enhance timely court performance and user accessibility;
- ◆ Using progressive court management technologies;
- ◆ Encouraging the use of appropriate dispute resolution mechanisms; and
- ◆ Continuously ascertaining, shaping and responding to the needs and expectations of court users and the community.

## THE HONORABLE PATRICIA A. COSGROVE

Judge Patricia A. Cosgrove received her Bachelor of Arts Degree from The University of Akron in 1974 and was the recipient of the Akron University Alumni Scholarship. She received her Juris Doctorate Degree from The University of Akron and was admitted to the Ohio Bar in 1978. While working her way through school, Judge Cosgrove served as a Law Clerk for the Ninth District Court of Appeals.

From 1978 to 1980, Judge Cosgrove served as Assistant Akron Law Director. She was a Senior Assistant Summit County Prosecutor in the Criminal Trial Division from 1981 to 1991. She also maintained a private law practice. Judge Cosgrove later served as Chief Counsel of the Civil Division of the Summit County Prosecutor's Office. In 1993, she was appointed to the Summit County Court of Common Pleas, elected in 1994 and re-elected in 2000 and 2006.

The General Division Judges elected Judge Cosgrove as the Administrative Judge for 2010. She was also elected Administrative Judge of the Summit County Common Pleas Court, General Division in 1995, 1996 and 2006. She also has served as Presiding Judge for two sessions. Judge Cosgrove currently serves as First Vice-President of the Ohio Common Pleas Judges Association and has been appointed by the Ohio Supreme Court to sit on the Committee to Study the Rules of Superintendence for Ohio Courts.

Judge Cosgrove has received special recognition from the Akron Bar Association for her work in mentoring students, and participates in the Minority Clerkship Program established by The University of Akron School of Law and the Akron Bar Association. Judge Cosgrove is proud to be one of three Summit County Common Pleas Court Judges to participate in the Re-Entry Court Program for convicted felons. This program is dedicated to helping individuals returning from prison make a successful transition back into society by addressing issues of employment, housing and substance abuse.

Judge Cosgrove has served as President of the Scanlon Inn of Court, a professional organization that is dedicated to mentoring new lawyers. She was the recipient of the outstanding Alumni Award from The University of Akron School of Law in 2004.

Judge Cosgrove is married and has three children and four grandchildren. Judge Cosgrove has been active in community organizations such as the Community Drug Board Foundation, the Victim Assistance Program and the Akron Bar Association.



**JUDGE COSGROVE AND STAFF**

**From left:** Paula McAviney, Kathie Nelson, Kandi O'Connor

# THE HONORABLE THOMAS A. TEODOSIO

Judge Thomas A. Teodosio graduated from The University of Akron with a Bachelor of Arts Degree in 1979. Thereafter, he received a Juris Doctor Degree from The University of Akron School of Law in 1982. That same year Judge Teodosio was admitted to the Ohio bar as well as the bar for the United States District Court, Northern District of Ohio and the United States Court of Appeals, Sixth Circuit. In 1986 he was authorized to practice before the United States Supreme Court.

Prior to beginning his judicial career, Judge Teodosio was in the private practice of law for 25 years. He was a partner in the law firm of Teodosio, Manos & Ward where he started his legal career in 1982. His law practice was general in nature, but focused heavily on trial work, both civil and criminal, including capital litigation. While in private practice, he served on the Summit County Trial Lawyers Association Board of Trustees and was a member of the Ohio Academy of Trial Lawyers. As an attorney, Judge Teodosio participated in programs that provided pro-bono legal services at the Hospice Care Center and through the Western Reserve Volunteer Legal Services.

In November 2000, Judge Teodosio was elected to serve on Summit County Council and won re-election in 2004. He was elected as President of Council in 2003 and was twice chosen to serve as Vice President. While on Council, he chaired the Finance, Public Works and Public Safety Committees and served as Vice Chairman of the Planning, Buildings and Economic Development Committee. As a Councilman, Judge Teodosio chaired the Summit County Predatory Lending Task Force and sponsored many pieces of legislation, including the creation of the Summit County Office of Consumer Affairs.

In November 2006, Judge Teodosio was elected Summit County Common Pleas Court Judge. In addition to his regular general division docket, Judge Teodosio presides over the Summit County Felony Drug Court. The Drug Court is a separate, specialized docket in which non-violent, drug-dependent offenders plead guilty to their offenses and are then provided intense, court-supervised treatment over an 18-24 month period with random drug testing and mandatory substance abuse/mental health programming. In 2008, the Court was awarded a federal SAMHSA grant that has resulted in the addition of enhanced programming available to Drug Court clients, including employment services, cognitive skills programming, mental health screening, crisis intervention counseling, anger management classes, family education programming and financial management classes. Participants must have police and prosecutor approval prior to entering the program. In order to graduate from the program, participants must abstain from the use of alcohol and drugs and otherwise demonstrate that they have become rehabilitated and are prepared to serve as a positive influence on our community. If the offender successfully completes the Program, their "guilty" plea is vacated and the case is dismissed. Offenders who fail to successfully complete the Program are sentenced on their felony conviction.

Judge Teodosio has also presided over court in the community at the Fugitive Safe Surrender sessions in 2007 and 2009. These court sessions resulted in over 1,100 individuals turning themselves in to law enforcement over the four-day period each year. The United States Marshal stated that Akron's program was one of the most successful Fugitive Safe Surrender operations to be conducted by the Marshals Service.

The General Division Judges elected Judge Teodosio as the Presiding Judge for 2010. He is a member of the American Judges Association; the Ohio Common Pleas Judges Association; the Ohio Judicial Conference (Specialized Dockets Committee member); the Ohio State Bar Association; and the Justinian Forum. Judge Teodosio also serves on the Local Pro Bono Committee for the Ohio State Bar Association's Judicially Led Appellate District Pro Bono Project.

Judge Teodosio was, and remains, deeply involved in our community. He currently serves on the Akron Civic Theater Board of Directors; the Akron Zoo Board of Trustees; the Rebuilding Together Advisory Board; the Stow Schools Foundation Board; and the Summit County Criminal Justice Advisory Board. In the past, he has served on the Walsh Jesuit High School Board of Trustees; the Summit County Consumer Affairs Board; the Akron/Summit Convention & Visitor's Bureau Board of Trustees; the Summit County Board of Control; the Summit County Audit Committee; the Summit County Investment Advisory Board; the Youth Leadership and the Adult Leadership Committees of the Stow-Munroe Falls Chamber of Commerce; and the Board of Directors at Community Support Services.

He participates annually as a celebrity chef at the "Men Who Cook" and "Grapes and Gourmet Guys" benefit events. Judge Teodosio is a member of the Italian-American Citizen's Club, the Sons of Italy, AHEPA, the Acker-Moore Memorial Post and the Hibernians Club.

Judge Teodosio's service to the community has been recognized by the YMCA Western Reserve Paul C. Hutchison Service to Youth Award; the "Harold K. Stubbs Humanitarian Award" for Distinguished Service in the Field of Government"; the "Urban Light Award" from The University of Akron Department of Public Administration and Urban Studies for "Service to the Akron Community"; the "Achievement Award" from the Council of Italian American Societies of Summit County; the "2008 Veterans Appreciation Award" from the Veteran Service Commission; and the East Akron Community House 40th Year Celebration of Community Organizing "Citizen's Participation Recognition".

Each year, Judge Teodosio speaks at many community meetings and events. In 2009, Judge Teodosio spoke at the Community Fellowship Ministries and Equal Access to Education, Dr. Martin Luther King, Jr., 23rd Annual Breakfast and Service; the Law Week Student Summit; the 25th Anniversary of Equal Access to Education Coalition (EAEC); the Kids College Program; the Torchbearers Group meeting; the Night Out Against Crime at the Church of God in Akron; the Leadership Akron Class XXV Justice Day event; the Summit County Fatherhood Initiative Fathers Walk; and Project Learn's Leader for Literacy Breakfast & Literacy Leadership Awards event. Judge Teodosio was a panelist at the Summit County Association for Justice meeting and a participant in the Summit County Stand Down for the Homeless and Displaced Veterans.

Judge Teodosio has been married to his wife, Summit County Juvenile Court Judge Linda Tucci Teodosio, since 1983. They live in Munroe Falls, Ohio, and have a son, a daughter, and a pet dog named "Liberty".



**JUDGE TEODOSIO AND STAFF**

**From front:** Judge Teodosio, Christopher Piekarski, Matthew Rich

## THE HONORABLE LYNNE S. CALLAHAN

Judge Lynne Callahan earned her Bachelor of Arts degree from the University of Akron, where she was named “Outstanding Senior Woman” in 1979. She earned her Juris Doctorate degree from The University of Akron School of Law in 1984 and was thereafter admitted to the Ohio Bar. After law school Judge Callahan chose a unique career path and joined the Akron Police Department where she served the community as a police officer and narcotics detective. In 1989 she joined the Summit County Prosecutor’s Office as an Assistant Prosecuting Attorney where she prosecuted major felonies. Judge Callahan also worked in the private sector.

Judge Callahan was appointed to the Akron Municipal Court on May 1, 1997, elected in November 1997 and re-elected in November 2003. While in the Akron Municipal Court, she was twice elected by her fellow judges to serve as Presiding Judge.

Judge Callahan was instrumental in the creation of the Akron Municipal Court’s Family Violence Court and presided over the Court from April 1998 until she was elected to the Common Pleas Court in 2009. Family Violence Court is an innovative domestic violence diversion program, which targets first time domestic violence offenders. During Judge Callahan’s tenure, the Family Violence Court received the Ohio Department of Rehabilitation and Correction Director’s Award for Excellence in Community Justice and the American Corrections Association National Exemplary Offender Award.

Judge Callahan was elected to the Summit County Court of Common Pleas in November 2008 for the term beginning January 3, 2009. She was recently named by Chief Justice Thomas Moyer to serve on the Ohio Supreme Court's Advisory Committee on Domestic Violence. Judge Callahan also participates in the Summit County Common Pleas Court Re-entry Court Program.

Judge Callahan has been active in the community and has been the recipient of several awards recognizing her community involvement, including the Urban Light Award. She is a member of the County of Summit Criminal Justice Advisory Board and served on the Board of Trustees of the Community Health Center Foundation. Judge Callahan has taught at The University of Akron and at the Supreme Court of Ohio Judicial College.

Judge Callahan is a lifelong resident of Summit County. She is married and the mother of three children.



**JUDGE CALLAHAN AND STAFF**

**From left:** Jenna Bouhall, Brian Scheetz, Shari Hower

## THE HONORABLE PAUL J. GALLAGHER

Judge Paul J. Gallagher graduated from The University of Notre Dame with a Bachelor of Arts Degree in 1966. He received his Masters Degree from John Hopkins University in 1980. Thereafter, he received a Juris Doctorate Degree from The University of Akron in 1986 and was admitted to the Ohio Bar the same year.

Judge Gallagher served as an Assistant to the County Executive of Anne Arundel County, Maryland in 1974 and 1975 and as Chief Assistant to the County Manager of Baltimore County, Maryland from 1976 to 1980. He returned home to Summit County and served as Safety Service Director for the City of Tallmadge until he entered law school. From 1991 through 2006, Judge Gallagher served as Assistant Prosecutor for Portage County Prosecutor's Office. In 1985, he was elected to serve as an at-large member of Summit County Council where he served for 22 years before being elected to the bench.

In November 2006, Judge Gallagher was elected Summit County Common Pleas Judge with the term beginning January 1, 2007.

Judge Gallagher was elected by the Summit County Common Pleas Judges to serve as Presiding Judge in 2008 and 2009.



**JUDGE GALLAGHER AND STAFF**

**From left:** Patricia Himelrigh, Michelle Manchester, Bridget Walters



## THE HONORABLE JUDY HUNTER

Judge Judy Hunter graduated from Ohio State University and later earned her Juris Doctorate Degree from The University of Akron School of Law. Judge Hunter worked in the private sector engaged in the general practice of law from 1978 to 1990. Prior to becoming a lawyer, Judge Hunter taught school. Past public service includes serving as elected Clerk of the Akron Municipal Court from 1991 to 1995.

On April 26, 2003, Judge Hunter was appointed by Governor Bob Taft to the General Division of the Summit County Common Pleas Court, was elected in 2004 and re-elected in 2008. Judge Hunter's past judicial service includes a term as Judge on Summit County's Juvenile Court from 1996 to 2002.

Judge Hunter is active in the community, having served on many boards and committees, including serving as President of the Board of Trustees of The Goodwill Industries of Akron, Ohio. Judge Hunter belongs to various professional organizations including the American, Ohio and Akron Bar Associations and the Ohio Association of Common Pleas Judges. Judge Hunter has been a frequent speaker at educational forums and community events.

Special awards include the Community Health Center's 1999 Friend of the Field Award, the 2002 Urban Light Award from the Department of Public Administration at The University of Akron, and a January 2000 award from the Better Business Bureau for "vision and innovative leadership in establishing the most successful conflict resolution mediation program in Summit County."



**JUDGE HUNTER AND STAFF**

**From left:** Jason Adams, Donna Slack, Ken Masich

## THE HONORABLE ALISON MCCARTY

Judge Alison McCarty graduated from Wheaton College in Wheaton, IL with a Bachelor of Arts Degree in English and obtained her Juris Doctorate Degree from Wake Forest University School of Law in Winston-Salem, NC. She began her legal career in 1987 as a Staff Attorney for Judge William Baird of the Ninth District Court of Appeals. In 1989, she became a Summit County Assistant Prosecuting Attorney. During her ten year career as an Assistant Prosecutor, Judge McCarty handled thousands of cases from low-level drug cases to death penalty murder trials.

As a criminal prosecutor, Judge McCarty personally tried nearly 100 jury trials and obtained convictions in an overwhelming majority of those cases. Judge McCarty prosecuted one of Summit County's most notorious murder cases in September 1998, obtaining an Aggravated Murder conviction of Captain Douglas Prade for the killing of his ex-wife, Dr. Margo Prade. That case received national attention and was seen on Dateline NBC, MSNBC and featured on HBO.

Judge McCarty was appointed to the Akron Municipal Court in May 1999, where she served for nine years, having been elected in 1999 and re-elected in 2005. As an Akron Municipal Court Judge, Judge McCarty presided over the Akron Municipal Drug Court from 2003 to 2007 and created and presided over the first urban DUI Court in the State of Ohio from 2007 until her election to the Summit County Court of Common Pleas. Judge McCarty was elected Presiding Judge for the Akron Municipal Court in 2005. She was named Committee Chair of the Year by the Akron Bar Association in 2002, awarded the 2005 Urban Light Award from the Department of Public Administration at the University of Akron, received the 2006 Legacy III Criminal Justice Award for Outstanding Service and is a MADD Red Ribbon Award Winner.

Judge McCarty has long been an advocate for victims, serving on the Summit County Domestic Violence Coalition, the Summit County Fatality Review Committee and is currently Chair of the Summit County Sexual Assault Coalition. Judge McCarty also co-chairs the Akron Bar Association's High School Mock Trial Committee, a position she has held for nine years. She is a former member of the Junior League of Akron, the Governor's Task Force on the Investigation and Prosecution of Child Abuse and the Ohio Coalition on Sexual Assault.

Judge McCarty was elected to a six-year term on the Summit County Common Pleas Court in November 2008 for the term beginning January 5, 2009.

Judge McCarty has been married to Thomas McCarty for twenty years and they are the parents of two daughters.

**JUDGE MCCARTY AND STAFF** (Not Pictured)  
Joan Arshinkoff, Lisa Nemes, Shay Greven

## THE HONORABLE TOM PARKER

Judge Tom Parker was elected to the Summit County Court of Common Pleas in 2008 to the term commencing May 1, 2009. Previously, Judge Parker was elected to the Akron Board of Education where he served from 1990 through 1993.

From 1979 through early 2002, Judge Parker engaged in private practice at the firm of Roetzel & Andress LPA in Akron. From 2002 until taking the bench, he was a partner in the firm of Parker, Leiby, Hanna & Rasnick LLC, also in Akron. During his nearly thirty years in private practice, Judge Parker represented clients in civil, criminal and domestic relations matters. He specialized in product liability issues and represented clients in numerous complex multi-party actions. His cases were in the courts of twenty states. Judge Parker is admitted to the Bars of the State of Ohio, The Supreme Court of the United States and of several federal courts.

Judge Parker is a graduate of Leadership Akron and has served in the Akron and Summit County community in various volunteer capacities since moving to Akron in 1979. He is married and the father of six children.



**JUDGE PARKER AND STAFF**

**From left:** William Wellemeyer, Jaclyn Darrah, Kim Arnold

## THE HONORABLE MARY MARGARET ROWLANDS

Judge Mary Margaret Rowlands graduated from Youngstown State University and received her Juris Doctorate Degree from The University of Akron School of Law. She was admitted to the Ohio Bar in 1989. Previously, Judge Rowlands was a partner in the law firm, Whitaker and Rowlands Co., LPA, in Akron. She became the Chief Legal Counsel in the Summit County Fiscal Office in 2005. In her litigation practice, she handled a wide variety of complex civil and criminal matters in both state and federal courts throughout the country.

In 2008, Judge Rowlands was elected to the Summit County Court of Common Pleas. Judge Rowlands has served on the Board of Trustees of the Akron Bar Association, having chaired its Common Pleas and Appellate Courts Committee. She was appointed to serve two terms on the Akron Bar Association's highly regarded Commission on Judicial Candidates. She was elected by her colleagues to the Ohio Bar Association's Council of Delegates. Judge Rowlands also, was a charter member of the Charles F. Scanlon Chapter of the American Inns of Court.

Judge Rowlands has been an adjunct professor The University of Akron School of Law and is dedicated to furthering an understanding of the law and related topics. She frequently speaks to lawyers, judges, journalists, law enforcement, educators, high school, college and law students, as well as civic groups like Leadership Akron in an effort to create dialog on these important issues.



**JUDGE ROWLANDS AND STAFF**

**From left:** Alan Medvick, Judge Rowlands, Anna Stormer, Dorianne Denard

## THE HONORABLE ELINORE MARSH STORMER

Judge Elinore Marsh Stormer graduated from Davidson College's Honors College. She received her Juris Doctorate Degree from The University of Akron School of Law. Judge Stormer practiced law in the private practice sector until 1989 when she was appointed General Counsel to the Summit County Executive.

In 1991, Judge Stormer was elected to the Akron Municipal Court and re-elected in 1993 and 1999. She started the first Municipal Drug Court and the first Mental Health Specialty Court in Ohio and has been a leader in bringing the concept of "therapeutic jurisprudence" to Ohio. Reelected in 2010, Judge Stormer was first elected in November 2004 to the Summit County Court of Common Pleas. In keeping with her commitment to intelligent sentencing and a "smart on crime" approach, in September 2006, she began Summit County's first Re-Entry Court to assist felons returning from prison to become law-abiding citizens. The Court reduces crime and has been recognized by the Ohio Supreme Court with Judge Stormer's appointment to Chief Justice Moyer's Task Force on Specialty Dockets. In 2010 Chief Justice Eric Brown appointed her to be an Ohio representative to the American Bar Association Specialized Dockets Committee.

The General Division Judges elected Judge Stormer as Administrative Judge for 2007, 2008 and again in 2009. In this position, she oversaw the budgetary and personnel matters for a Court of 157 employees and a budget of \$13 million, in addition to maintaining her docket.

Among others, Judge Stormer serves on the Ohio Judicial Conference Specialized Courts Committee and the Criminal Justice Advisory Board. She is a board member of the Cascade Locks Association and Ardmore Inc. In the past, she has served on the Supreme Court of Ohio Advisory Committee on the Mentally Ill in the Courts, its Drug Court Task Force, Ohio Community Corrections Organization Board, Summit County Alcohol Drug and Mental Health Services, Weathervane, Community Aids Network, Women's Network and the Citizens Advisory Board of the Akron Junior League, as well as numerous other community organizations.

Judge Stormer has received many community awards including the statewide OCCO C. J. McLin Award, the Urban Light Award for Public Service, the Fred Frese Advocacy Award and the Public Official of the Year Award from the DAR. In 2008, Judge Stormer was honored to receive the Harold Stubbs Award for Law and the Committee Chair of the Year Award from the Akron Bar Association.



**JUDGE STORMER AND STAFF**

**From left:** Michael Altvater, Lillian Mitchell, Judge Stormer, Shauna Corder

## THE HONORABLE BRENDA BURNHAM UNRUH

Judge Burnham Unruh earned a Bachelor of Arts Degree from Wheaton College in 1980, graduating with honor. She earned her Juris Doctorate Degree in 1984 from The University of Akron School of Law.

Judge Burnham Unruh was admitted to the Florida Bar in 1984 and was in private practice in Florida until she returned to Ohio. She was admitted to the Ohio Bar in 1992.

Judge Burnham Unruh was the Coordinator of the Summit County Juvenile Court Guardian Ad Litem Program from 1992 to 1993. In 1993, Judge Burnham Unruh joined the Summit County Prosecutor's Office as an Assistant Prosecutor. She served first in the Juvenile Division and then in the Criminal Division.

In 1997, Judge Burnham Unruh was appointed as a Magistrate in Juvenile Court.

In July of 1998, Judge Burnham Unruh was appointed to the Akron Municipal Court. In March 1999, Judge Burnham Unruh was appointed to the Summit County Court of Common Pleas. She was elected to the Court of Common Pleas from 2000, 2002, and 2008.

Judge Burnham Unruh is a member of the Akron and Ohio Bar Associations and is active in many community activities.

Judge Burnham Unruh is married to Robert Unruh and has a son and daughter.



**JUDGE UNRUH AND STAFF**

**From left:** Carrie Roush, Tom McLaughlin, Kimberly Miller

## CIVIL DIVISION CASE ACTIVITY 2010

The Civil cases filed in 2010 reflect a decrease of 778 cases, or 9.1 percent less than the 9,304 cases filed in 2009. The number of Civil cases terminated in 2010 totaled 9,456. This showed a decrease of 1,340 cases, or 14.2 percent below the 10,796 cases that were terminated in 2009.

In 2006, the number of new case filings was 8,608 compared to 8,526 cases filed in 2010. This shows a decrease of 0.9 percent, or 82 cases. Civil Terminations increased from 9,215 in 2006, to 9,456 in 2010, which represents an increase of 241 terminated cases, or 2.6 percent. The average civil caseload per Judge was 395 on December 31, 2010, compared to an average civil caseload per Judge of 408 in 2009.

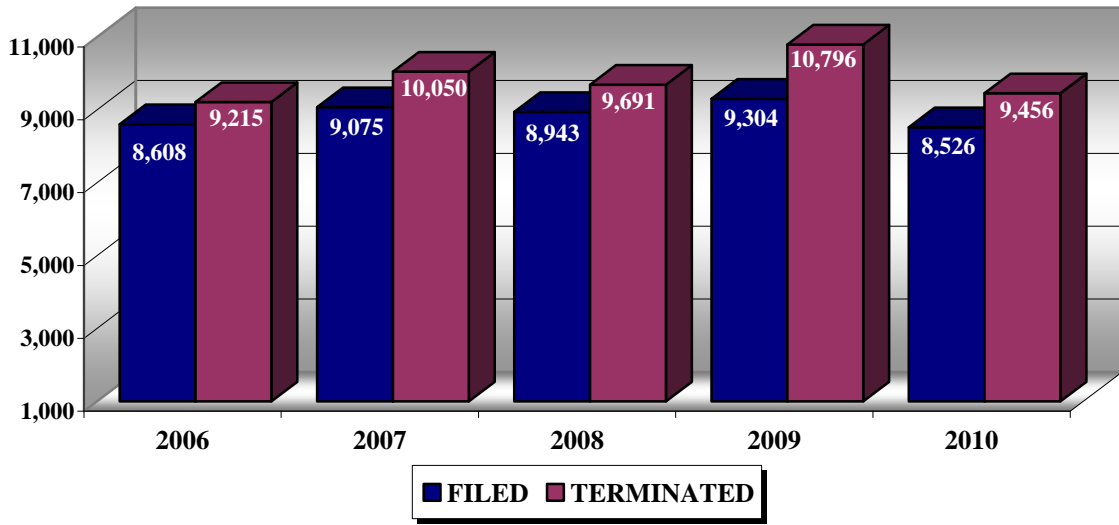
TYPE OF CASE	Professional Tort	Product Liability	Other Torts	Workers Compensation	Foreclosures	Administrative Appeal	Complex Litigation	Other Civil	<u>TOTAL</u>	Visiting Judge
Pending beginning of period	95	10	718	213	1,657	73	9	1,280	4,055	43
New cases filed	69	10	929	312	4,321	118	X	2,738	8,497	29
Transferred, reactivated or redesignated	12	0	119	84	396	11	3	151	776	37
<b><u>TOTAL</u></b>	<b>176</b>	<b>20</b>	<b>1,766</b>	<b>609</b>	<b>6,374</b>	<b>202</b>	<b>12</b>	<b>4169</b>	<b>13,328</b>	<b>109</b>

### TERMINATIONS BY:

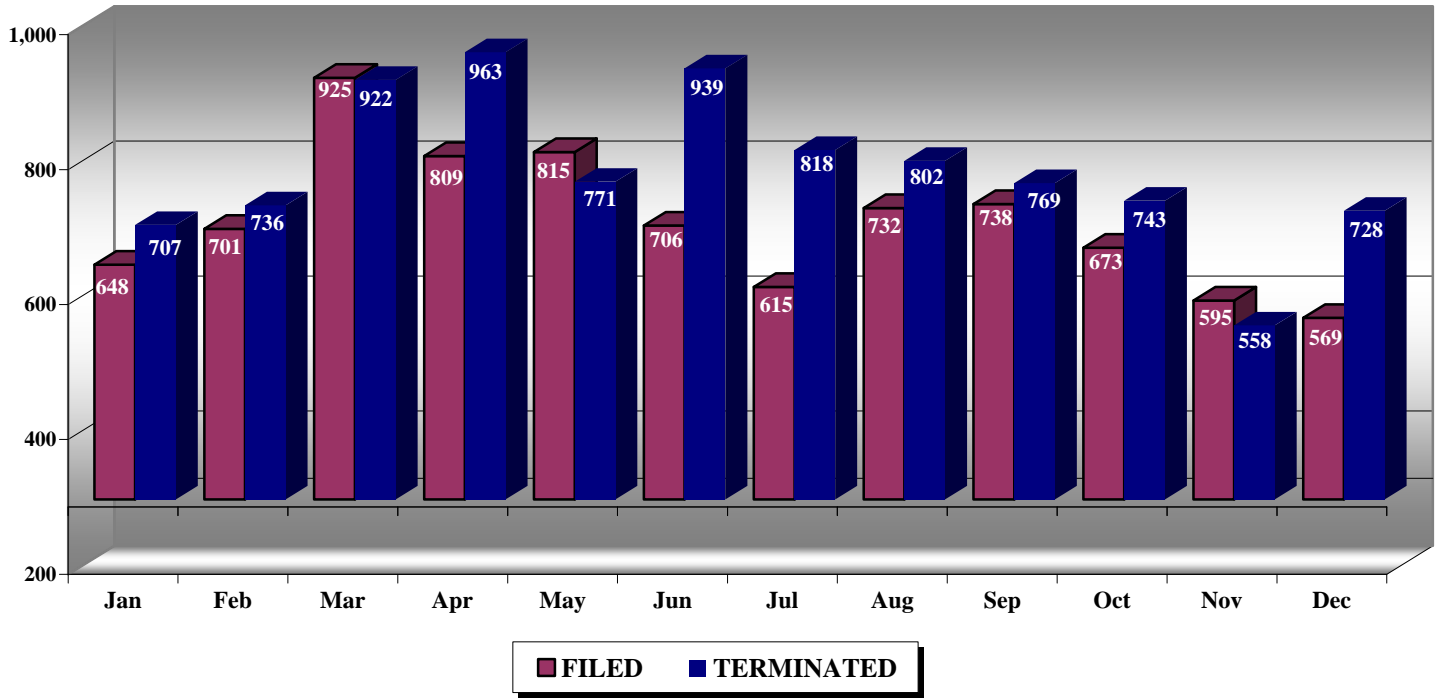
Jury trial	7	0	24	5	0	0	0	12	48	1
Court trial	0	0	3	0	3	0	0	21	27	1
Settled or dismissed prior to trial	27	3	535	145	283	13	7	504	1,517	9
Dismissal	33	3	138	63	674	42	1	508	1,462	18
Dismissal for lack of speedy trial (criminal) or want of prosecution (civil)	2	0	18	1	151	13	0	112	297	0
Magistrate	0	0	5	0	2	1	0	247	255	0
Diversion or Arbitration	0	0	102	47	102	1	0	61	313	0
Default (civil)	0	0	24	1	2,427	0	0	931	3,383	0
Transfer to another judge or court	10	1	103	84	276	6	0	141	621	1
Referral to private Judge	0	0	1	0	0	0	0	0	1	0
Bankruptcy stay or interlocutory appeal	3	1	21	1	161	0	0	131	419	27
Other terminations	9	2	55	31	425	66	0	446	1,034	22
<b><u>TOTAL</u></b>	<b>91</b>	<b>20</b>	<b>1,029</b>	<b>378</b>	<b>4,605</b>	<b>142</b>	<b>8</b>	<b>3,114</b>	<b>9,377</b>	<b>79</b>
Pending end of period	85	10	737	231	1,769	60	4	1,055	3,951	30

# CIVIL DIVISION CASES 2010

## Five-Year Comparison of Data



## 2010 Monthly Comparison





## 2010 CRIMINAL DIVISION CASE ACTIVITY

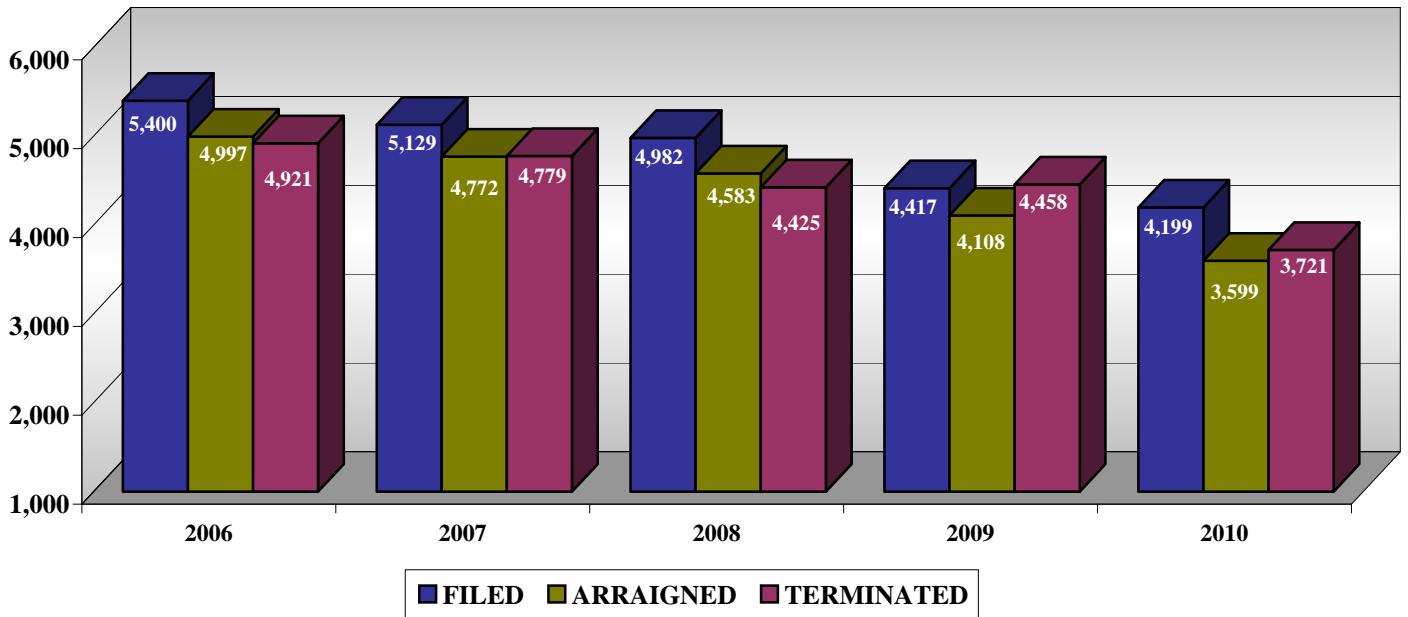
	2006	2007	2008	2009	2010
<b>CASES FILED</b>	5,400	5,129	4,982	4,417	4,199
<b>CASES ASSIGNED/ARRAIGNED</b>	4,997	4,772	4,583	4,108	3,599
<b>CASES TERMINATED</b>	4,921	4,779	4,425	4,458	3,721
<b>TRIALS:</b>					
Jury	163	154	147	171	128
Court	39	30	38	36	27
<b>FELONY CHARGES:</b>					
Filed	10,340	10,506	10,393	8,021	7,843
Convictions	4,412	4,280	4,261	3,481	3,001
Dismissals	3,527	4,344	4,225	4,714	3,812
<b>MISDEMEANOR CHARGES:</b>					
Filed	4,861	4,588	3,983	3,219	3,366
Convictions	1,241	1,219	1,210	876	811
Dismissals	3,189	3,246	2,726	2,724	2,306
<b>DISPOSITIONS:</b>					
Ohio Dept. of Rehabilitation	1,402	1,325	1,109	1,159	1,009
Ohio State Reform. For Women	171	155	114	120	101
Community Control	2,357	2,279	2,273	2,254	1,800
Probation	385	315	314	233	202
Summit County Jail	104	90	49	50	28
Glenwood Jail	1	2	1	3	0
Halfway House	2	1	7	0	1
Community Service	0	2	4	2	0
Suspended Sentence	26	74	45	57	40
Dismissals	208	216	192	195	148
Fine/Costs	18	52	38	57	25
Restitution	3	2	3	2	0
Transfer to Another County	0	0	0	0	0
IILC Completion	80	123	121	114	151
PDP Completion	79	52	47	84	81
Drug Court Completions	27	33	57	78	85
Not Guilty Verdicts (Jury Trials)	39	34	29	26	28
Not Guilty Verdicts (Court Trials)	8	7	11	5	6
NGRI	6	6	4	7	4
Death Penalty	2	0	1	1	1
Remanded (back to Muni Court)	n/a	n/a	2	0	11
Other	3	11	4	11	0
<b>MOTIONS FOR JUDICIAL RELEASE</b>	1,181	1,218	1,155	1,203	1,308

**Criminal Case Activity (cont'd)**

	2006	2007	2008	2009	2010
<b>CHARGE/PLEA STATISTICS</b>					
<i>Pled Guilty - Original Charge</i>					
Felonies	4,661	4,337	3,633	3,507	2,896
Misdemeanors	1,035	1,037	881	835	706
<i>Pled Guilty - Amended Charge</i>					
Felonies	1,308	1,263	1,067	1,196	916
Misdemeanors	19	17	24	18	10
<i>Pled No Contest</i>					
Felonies	62	25	24	41	35
Misdemeanors	21	13	8	18	11
<i>Merged Counts</i>					
Felonies	2	17	31	26	5
Misdemeanors	3	1	1	3	3
<i>Dismissals</i>					
Felonies	3,527	4,344	4,225	4,714	3,812
Misdemeanors	3,189	3,246	2,726	2,724	2,306
<i>Jury Verdict - Guilty</i>					
Felonies	207	192	232	226	152
Misdemeanors	56	52	56	39	35
<i>Jury Verdict - Guilty (Amended)</i>					
Felonies	16	10	12	14	2
Misdemeanors	0	0	1	1	0
<i>Jury Verdict - Not Guilty</i>					
Felonies	134	153	83	114	86
Misdemeanors	30	25	16	20	15
<i>Court Verdict - Guilty</i>					
Felonies	17	32	44	32	32
Misdemeanors	20	7	33	16	11
<i>Court Verdict - Guilty (Amended)</i>					
Felonies	4	2	4	12	4
Misdemeanors	0	0	0	1	0
<i>Court Verdict - Not Guilty</i>					
Felonies	28	23	26	32	19
Misdemeanors	12	23	13	12	12
<i>Court Verdict - NGRI</i>					
Felonies	9	9	6	13	7
Misdemeanors	2	3	1	10	2
<i>Rule 29</i>					
Felonies	n/a	10	8	20	10
Misdemeanors	n/a	1	0	0	5
<i>Remanded</i>					
Felonies	0	0	0	0	0
Misdemeanors	0	0	6	0	0

# 2010 CRIMINAL DIVISION CASE ACTIVITY

## FIVE-YEAR DATA COMPARISON



**CRIMINAL DIVISION STAFF**

**First Row, from left:** Carolyn Deckert, Terre Skinner, Julie Glinsky, Marie Donofrio, Joan Mosley  
**Second Row from left:** Melissa Ludwig, Polly White, Tish Carillon (Division Commissioner)  
**Back Row, from left:** LeighAnn Fultz, Theresa Caprez, Deborah Smith

## VISITING JUDGES

In 2010, the Summit County Common Pleas Court, General Division, continued its use of Visiting Judges to assist with the caseload. The Court used the following retired judges to preside over a total of 140 days during 2010:

JUDGE	RETIRED FROM	DIVISION
Judith A. Cross	Medina County	Common Pleas Court
Thomas P. Curran	8 <sup>th</sup> District	Court of Appeals
H. Fred Inderlied, Jr.	Geauga County	Common Pleas Court
R. Patrick Kelly	Cuyahoga County	Common Pleas Court
Joseph R. Kainrad	Portage County	Common Pleas Court
James E. Murphy	Summit County	Common Pleas Court
Marvin A. Shapiro	Summit County	Common Pleas Court
Ted Schneiderman	Summit County	Common Pleas Court

<b>COST OF VISITING JUDGES FOR 2010</b>	
<b>Payment by County</b>	<b>\$9,250.60</b>
<b>Payment by State</b>	<b>\$68,010.07</b>
<b>Total</b>	<b>\$77,260.67</b>

## MEDIATION DATA FOR 2010

In June of 1998 the Court began to offer court-sponsored mediation to parties who have filed suit in Common Pleas Court under the direction of Frank Motz, Chief Court Mediator. Cases are mediated as assigned by the General Division Judges. Cases that can be assigned to mediation include personal injury, business disputes, workers' compensation, foreclosure, quiet title, and non-payment of student loans. In 2009, a new program to mediate foreclosure cases began. Cases can be selected by the assigned judge or can be sent to mediation because all of the parties have consented. In 2010, over 800 cases were settled after referral to mediation.

CASE STATUS	2006	2007	2008	2009	2010
<b>Cases Pending Beginning of Year</b>	<b>428</b>	<b>365</b>	<b>442</b>	<b>424</b>	<b>708</b>
<b>Cases Referred</b>	<b>1,253</b>	<b>1,465</b>	<b>1,307</b>	<b>2,119</b>	<b>1,791</b>
<b>Returned to Court</b>	<b>446</b>	<b>380</b>	<b>360</b>	<b>506</b>	<b>700</b>
<b>Cases Settled</b>	<b>644</b>	<b>757</b>	<b>792</b>	<b>1,057</b>	<b>805</b>
<b>Removed prior to completion</b>	<b>224</b>	<b>249</b>	<b>242</b>	<b>295</b>	<b>354</b>
<b>Cases Pending End of Year</b>	<b>350</b>	<b>443</b>	<b>355</b>	<b>705</b>	<b>642</b>



### CIVIL DIVISION STAFF

**First row, from left:** Cora Dawkins, LeAnn Backer  
**Second row, from left:** Norma Blank, Alison Pfeister, Carol Hoover  
**Third row, from left:** Lynn Covert, Cheryl Goldstein (Division Commissioner)  
**Last row, from left:** Suzanne Stephens, Frank Motz, Cheryl Hollis

## MAGISTRATE JOHN H. SHOEMAKER

John H. Shoemaker, the Chief Magistrate for the General Division of the Summit County Court of Common Pleas, has served the Court for twenty-six years. The Magistrate assists the General Division Judges by handling a variety of civil matters assigned to him via general or limited orders of reference, via Civil Rule 53 and Local Rules of Practice 18. The Magistrate can preside over bench or jury trials and can handle any matters preliminary to litigation.

Under Criminal Rule 19, the Magistrate may perform some criminal tasks. The Magistrate conducts all arraignments for the General Division Judges starting in 1991. In 1998, a Video Arraignment System/Program was implemented and has been very successful. That system utilizes a closed-circuit television to arraign defendants who are incarcerated in the Summit County Jail.

Beginning in 2004, a walk-through waiver of arraignment procedure, which is overseen by the Magistrate, was instituted and has also been successful to date.

Below is a recap of data for the Magistrate's Office for the 2010 year.

CIVIL CASE ACTIVITIES	
<b>Bench Trials</b>	<b>30</b>
<b>Jury Trials</b>	<b>7</b>
<b>Oral Hearings</b> <i>Including Civil Protection Orders Ex Parte and Full</i>	<b>712</b>
<b>Status Conferences</b>	<b>133</b>
<b>Total Activities</b>	<b>882</b>

CRIMINAL CASE ACTIVITIES	
<b>Jailed Defendants Arraigned via Closed-Circuit Television</b>	<b>1,708</b>
<b>Defendants Utilizing Walkthrough Procedure</b>	<b>592</b>
<b>Defendants Arraigned in Courtroom</b>	<b>2,197</b>
<b>Total Defendants Arraigned</b>	<b>4,497</b>

## FELONY DRUG COURT 2010

The Summit County Felony Drug Court (SCFDC) is an innovative program available to felony drug possessions/abuse offenders county-wide, taking offenders from all three Municipal Courts within the county - Akron, Barberton and Stow. This program is intended to swiftly introduce drug possession/abuse offenders to drug treatment with continuing judicial involvement, to increase the likelihood of rehabilitation and reduce the likelihood of recidivism. It is a collaborative effort between the courts, prosecutor's office, law enforcement, defense attorneys and treatment providers, to provide offenders with mandatory treatment, increased supervision and coordinated use of community resources with the following goals in mind:

1. Consolidate service delivery to Summit County Felony Drug Court clients.
2. Reduce the incidence of substance abuse among the adult felony offender population of Summit County.
3. Reduce recidivism among drug possession/abuse offenders and contribute to community safety.
4. To provide the courts with another sentencing option to serve the needs of the felony offenders in Summit County in order to reduce the use of state prisons and local jail facilities.
5. To enhance the education level of the adult felony drug offender population.
6. To increase the rate of employment among adult felony drug offenders.
7. To enhance the participant's ability to function in the community.

This post-adjudication program continues to experience tremendous growth. In 2010, there were 142 intakes and 198 active participants as of the end of December 2010. This is a 12% increase over the previous year.

Total of Defendants Screened for Drug Court					
Male	Female	African-American	Caucasian	Other	Total Screened
746	216	489	457	4	962

Total Defendants Entering Drug Court					
Male	Female	African-American	Caucasian	Other	Total Entered
96	46	40	101	1	142

Reason for Ineligibility	Number of Persons
On Parole / Post Release Control or Community Control	62
Trafficking Conviction	88
Trafficking Arrest within the Last 10 years	104
Contempt History	26
Police Deny	29
Current Charge is Felony 1, Felony 2 or Felony 3	95
Prior Felonies	17
Capias Pending	13
Other Court Involvement (Felony or Misdemeanor Pending)	84
History of Violence	26
Rejected by Prosecutor	1
Current Drug Court, FVC, MHC or Reentry Court	17
Prior Drug Court or IILC (Intervention in Lieu of Conviction)	27
Failure to Appear for Drug Court Screening	5
Co-Defendant	104
Rejected by Defendant	19
Pending Companion Case Disqualifies	91
Stow Municipal Court	0
Mental/Medical Health Issues	1
Tier III Sex Offender or Sexual Predator	2
Drug of Choice Unable to be Screened	3



**ADULT PROBATION  
ANNUAL REPORT FOR 2010**

**DIRECTOR'S NOTES**

The year 2010 continued to be a period of progress for the Adult Probation Department. As the department embarked on the road to achieving Evidenced Based Practices (EBP), a key component of this initiative was launched. During the month of January 2010, all new referrals to the Adult Probation Department received a pre-screener and, if appropriate, a full screen assessment using the Ohio Risk Assessment System (ORAS). The ORAS was developed by the University of Cincinnati to be used as a tool to determine risk for recidivism. The results of the assessment were used to aid probation officers in the development of case plans, which are used to better assist offenders to achieve successful outcomes. During 2010, the assessment team consisted of one full-time assessment officer and two part-time assessment officers.

The implementation of alternative hours continued in 2010. The Adult Probation Department successfully maintained a Saturday schedule, twice a month, in order to create an additional reporting opportunity for the offenders. The success of this initiative is documented in this report.

Caseloads reduced in size throughout the year. In January, the total active offender population was approximately 4,500 offenders. By year's end, the total offender population was approximately 4,200. As a result, individual caseloads dropped to more manageable numbers, enabling probation officers to be more proactive in addressing the needs of their probationers.

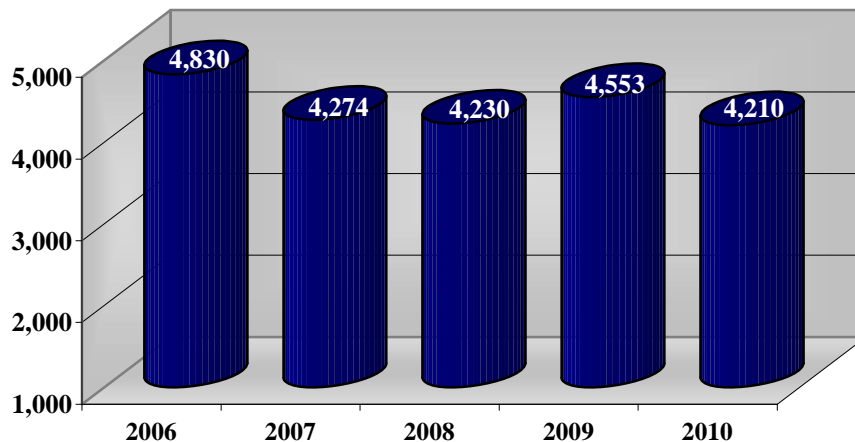
**SATURDAY REPORTING**

The number of offenders who reported on Saturdays during 2010 was 230. There were 183 who reported as scheduled, 44 who did not report and three who reported and were not scheduled. In 2011, it is expected that more offenders will use this reporting option.

**SUPERVISION**

The number of offenders under supervision at the Adult Probation Department, at the end of 2010, was 4,210 compared to 4,553 in 2009.

**SUPERVISION CASELOAD 2006 THRU 2010**



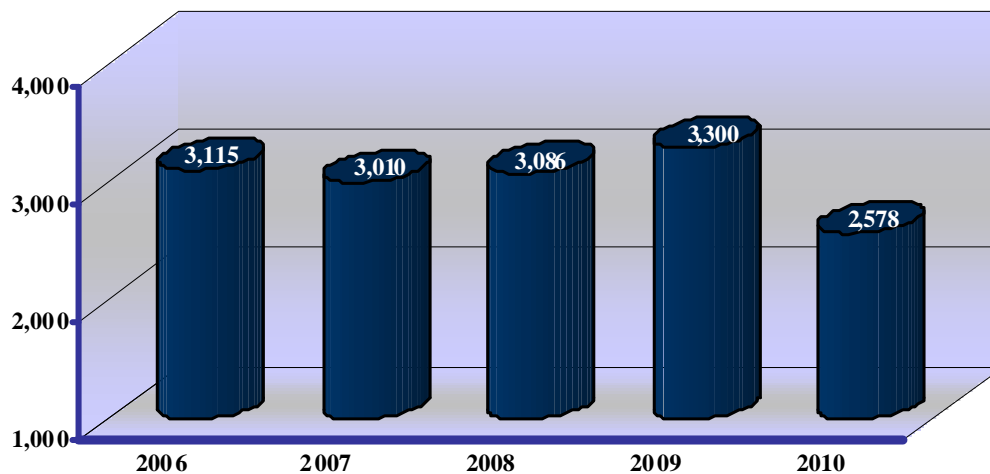
## NEW PROBATION REFERRALS

The number of new cases in 2010 was 2,578 compared to 3,163 in 2009. The chart below includes all referrals to the Adult Probation Department with the exception of the Intensive Supervision Unit.

NEW PROBATION REFERRALS	2010
ADMINISTRATIVE	2
COMMUNITY SERVICE	6
CHILD SUPPORT	27
DOMESTIC VIOLENCE	238
FELONY DUI	4
INTERVENTION IN LIEU	148
INTERSTATE COMPACT	32
MENTAL HEALTH	93
RE-ENTRY COURT	217
SEXUAL OFFENDER	80
REGULAR SUPERVISION	1,731

The following chart shows a breakdown of the new cases referred to Probation over the past five years:

NEW CASES FOR SUPERVISION 2006 THRU 2010



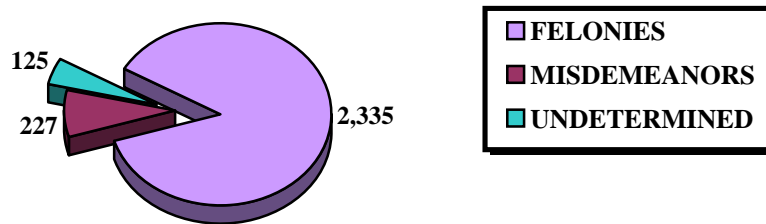
## DEMOGRAPHICS FOR OFFENDER POPULATION

During 2010, a number of cases were referred to the Adult Probation Department. The demographic information for those case placements is as follows:

### FELONY AND MISDEMEANOR

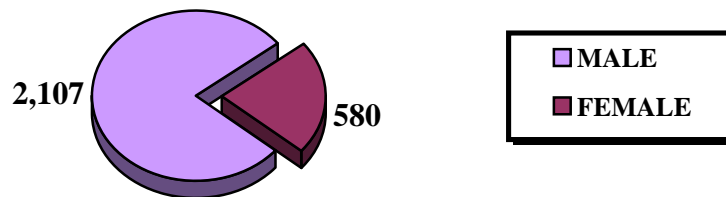
During 2010, 2,687 cases were referred to the Adult Probation Department. Of those cases 2,335 were felony level convictions. Additionally, there were 227 misdemeanor cases assigned to the Adult Probation Department for supervision. There were 125 cases undetermined.

Demographic information for 125 undetermined cases was not available. These cases were courtesy supervision cases and non-conviction cases. Due to that factor our current case management system does not track those particular cases.



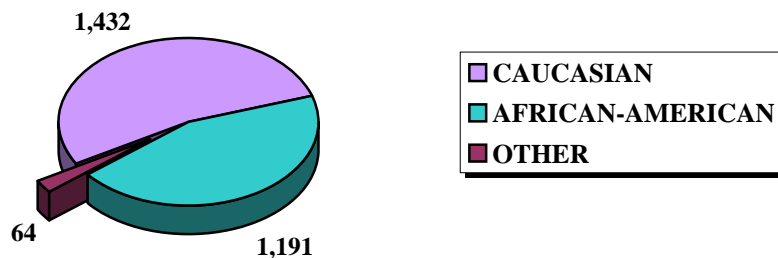
### BY GENDER

In regards to Gender, there were 2,107 males placed on supervision in 2010. By contrast, the Court referred 580 females for supervision.



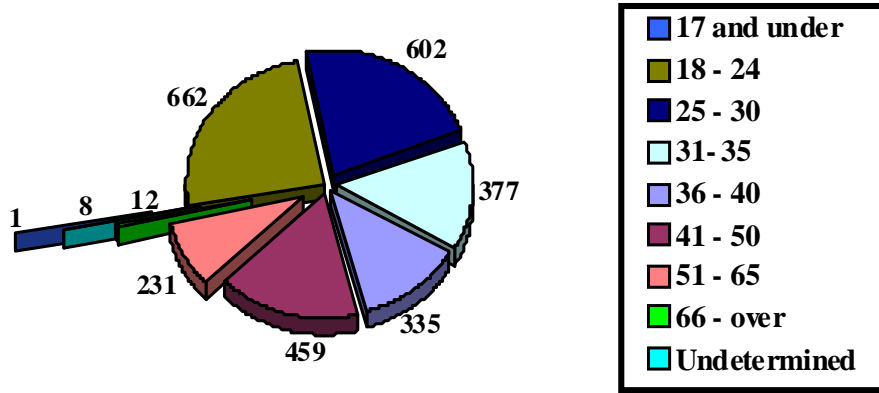
### BY RACE

Caucasian referrals numbered 1,432 while African-Americans accounted for 1,191 of the offenders placed on supervision. There were 64 placements of various ethnicities, such as Hispanic or Asian decent.



**OFFENDERS BY AGE**

The following is a breakdown of Offenders by Age for 2010:



**INTENSIVE SUPERVISION UNIT (ISP)**

The Intensive Supervision Program (ISP) is a state funded program that was provided to the Adult Probation Department in 1990 as an alternative to prison incarceration. In 2010, 175 felony offenders were diverted to ISP. The ISP continues to consist of one (1) supervisor and four (4) probation officers.

During 2010, there were 172 Terminations from the ISP Unit. The following table contains the details of those Terminations.

<b>SUCCESSFUL TERMINATIONS:</b>	
REDUCED TO BASIC SUPERVISION (45)	66
RELEASED FROM COMMUNITY CONTROL (21)	
<b>UNSUCCESSFUL TECHNICAL VIOLATIONS</b>	50
<b>UNSUCCESSFUL NEW FELONIES</b>	8
<b>UNSUCCESSFUL NEW MISDEMEANORS</b>	5
<b>ADMINISTRATIVE RELEASES</b>	10
<b>TERMINATIONS DESIGNATED AS OTHER</b>	33
<b>TOTAL</b>	<b>172</b>

## **TERMINATION OF SUPERVISION AND SENTENCING STATISTICS**

During 2010, there were 1,090 supervision cases that were closed due to expiration. An additional 610 cases were closed due to early termination and administrative closings by the Court. A total of 1,700 cases were closed for the year.

As a result of non-compliance with graduated sanctions sometimes the end result has been incarceration, for some offenders. In 2010, 848 offenders were sentenced to the Department of Corrections, 147 offenders were sentenced to the Ohio State Reformatory for Women, and 32 sentencings were to the Summit County Jail.

The aforementioned incarcerations were the result of recommendations due to Community Control Violations (782), Pre-Sentence Investigation Reports (250), Non-compliance with the Intervention in Lieu of Conviction statute (1), and Resentencing due to incarceration in another county (1).

## **PRE-SENTENCE INVESTIGATION UNIT**

The Pre-Sentence Investigation Unit writes all Pre-Sentence Investigation Reports for the Court. Currently, there are five PSI writers in the unit. These writers do not carry a caseload and concentrate solely on the writing of the Pre-Sentence Reports. There is one Sex Offender Writer and one Domestic Violence Writer within the Pre-Sentence Investigation Unit.

The Pre-Sentence Investigation Report consists of circumstances of offense, prior criminal history, social history and impressions/recommendations. When required, the report also includes a victim impact statement. The reports are researched and written using collateral sources such as law enforcement agencies, employment records, medical records and educational records.

In 2010, the Pre-Sentence Investigation Unit completed 596 Pre-Sentence Investigation Reports. There were 70 Domestic Violence Pre-Sentence Investigations and 40 Sex Offense Pre-Sentence Investigations included in those completed reports.

## **VICTIM IMPACT STATEMENTS**

The Adult Probation Department completes Victim Impact Statements when Court ordered or when the victim is clearly identified and information is obtainable. For confidentiality purposes these statements are presented in a sealed green envelope. In 2010, our writers completed 300 Victim Impact Statements.

## **FELONY DUI SUPERVISION**

In 2010, the Felony DUI Unit supervised 34 offenders. Of these offenders, 26 were male and 8 were female. These offenders are required to submit to weekly reporting, mandatory 12-step/self help attendance, alternate sanctions and treatment. During 2010, nine (9) offenders (males) successfully completed supervision. Two (2) offenders (females) were returned to Court for violations. One was violated for a new felony arrest, while the other for committing a new Felony DUI offense. Both were sentenced to the Ohio Department of Corrections. Currently there are two (male) offenders with active warrants for failing to report. This upcoming year, the unit will be increasing its use in the SCRAM Personal Alcohol Monitoring System to insure compliance, as well as more random alcohol screens.

## **DOMESTIC VIOLENCE UNIT**

The Adult Probation Department has specialized supervision of domestic violence offenders in conjunction with grant monies, provided by the Summit County Prosecutor's Office, through the Federal Grants to Encourage Arrest Policies and Enforcement of Protection Orders Program. Supervision of these offenders is accomplished through frequent contact with the supervising probation officer, participation in a Batterer's Prevention Program or other appropriate counseling and treatment programs and victim contact by the probation officer. During 2010, the department had an average of 392 domestic violence category offenders under the supervision of general supervision probation officers and the Domestic Violence Unit Specialist Officer. The Domestic Violence Unit Officer had an average of 137 offenders under supervision. All officers had over 5,264 contacts with offenders in the office, by phone, and in the field. During 2010, 124 offenders successfully completed supervision. Officer Kelli Anderson and the Pre-Sentence Investigation Unit completed 70 specialized reports on domestic offenders.

## **MENTAL HEALTH UNIT**

The purpose of this unit is to supervise individuals diagnosed with a severe mental illness that hinders their ability to function on a daily basis. Collaborative efforts have continued to be maintained with the Summit County Jail Behavioral Health Unit, C.I.T., and the mental health agencies in the community to meet the needs of this specialized population with the help of the Alcohol, Drug and Mental Health Board of Summit County.

The Mental Health Unit consists of two probation officers whose caseloads are determined by the level of functioning of the individual. This results in a smaller caseload for each of the officers to deal with those requiring more intense monitoring. These officers supervise a total of 200 mental health cases. There were 79 new offenders assigned to this unit in 2010. Furthermore, there were 72 successfully released from supervision.

## **SEX OFFENDER UNIT**

Two probation officers are currently supervising the Sex Offender caseload. The purpose of this unit is to supervise individuals convicted of any sexually related offense, while assuring the compliance of the Adam Walsh Act and Megan's Law, as well as ensuring the safety of the victims and the community.

During 2010, the Sex Offender Specialists teamed up with local law enforcement agencies such as the Adult Parole Authority, the United States Marshals Service, Akron Police Department and the Summit County Sheriff's Office, as well as treatment providers such as Summit Psychological Associates, Inc. and Portage Path Behavioral Health to assure compliance. The probation officers who are assigned to this caseload are part of the Summit County Sexual Assault Coalition and the Summit County Sex Offender Taskforce.

The Sex Offender Unit utilizes field contacts to make sure that offenders are registering their address as directed with the Summit County Sheriff's Office. In 2010, the Sex Offender Unit conducted 1,253 field visits to offenders' residences. This Unit also utilizes community or collateral contacts to verify its offenders' compliance to the rules of probation and to the sex offender specific rules of probation. In 2010, the Sex Offender Unit made 2,384 contacts to family, relatives, treatment providers and other community contacts. Continuing education is vital to the supervision of sex offenders; therefore, the Sex Offender Unit completed numerous hours of sex offense specific training. Due to the intensive nature of sex offender supervision, the Sex Offender Unit completed 1,683 office visits in 2010. At the end of 2010, the sex offender total caseload was 121.

In 2010, the Sex Offender Unit participated in a countywide address verification sweep for all sex offenders residing in Summit County. Probation Officers, along with authorities from numerous other local law enforcement agencies, verified the addresses of most of the sex offenders who register in Summit County.

## COMMUNITY SERVICE

**New Referrals** accepted into the Community Service Program, interviewed by the Coordinator, placed in an appropriate agency and monitored through completion totaled 578 for the year 2010.

The statistics are as follows:

**Court Ordered Sanction:** 54 clients

Terminated and returned to court due to noncompliance: 14 clients

Total number of community service hours worked: **3,702 hours**

**Community Service in Lieu of Paying Court Costs and Probation Fees:** 524 clients

Terminated for failure to work or behavioral problems: 174 clients

Costs waived due to pre-existing medical conditions: 9 clients

Clients who chose to pay off costs, after being placed in an agency: 6 clients

Total number of community service hours worked, in lieu of paying costs and fees: **41,177 hours**  
at a base rate of \$8.00 an hour, this figure is equivalent to: **\$329,416.00**

**Clients referred by Re-Entry Court:** 61 clients (included in totals)

**22 new agencies** were recruited and agreed to accept community service workers on a regular basis, for a total of **153 agencies**.

## REENTRY COURT

The Reentry Court Program currently has 140 clients spread out among five Courts (Judge Cosgrove, Judge Stormer, Judge Unruh and Judge Hunter). Clients may enter the program if judicially released and are eligible to graduate in about one year. Clients receive case management from reentry caseworkers located at the Oriana House Non-Residential Services Facility. The Judge, a Court Liaison or Reentry Coordinator and the Reentry Caseworkers serve as a team to assist clients through the course of the program until graduation. Clients make regular Court appearances for status reviews or sanctions. Clients who sanction out of the program are returned to prison to complete any remaining time left on their original sentence. The Summit County Reentry Court Program has a success/retention rate of 70% and serves as a "model" under the Supreme Court of Ohio.

## LAW ENFORCEMENT AUTOMATED DATA SYSTEM (L.E.A.D.S.)

Terminal Agency Coordinator (TAC), Michelle Kocian, compiled the following statistics:

- Per documentation from records kept in Columbus, operators made 32,059 request inquiries and received 68, 228 transactions back. This information was dispersed to the probation and pretrial officers, Court officials, Drug and Reentry Courts and Psycho Diagnostic Clinic employees who requested them.
- Pretrial LEADS operators (located in the Summit County Jail) made 19,677 request inquiries and received 40,911 informational transactions back.
- On June 22, 2010, an audit was conducted by a LEADS representative from Columbus. The final result: our agency was 100% compliant.
- Two employees were trained and certified to be LEADS operators: Cathy Cherico and Randy Vipperman. As of December 29, 2010, we have a total of 22 operators.

- Ten operators passed their recertification tests (a bi-annual requirement): Lee Runkle, Natalie Gelfo-Michailides, Michelle Kocian, Kelly Bowen, Terry Strubbe, Helga Keller, Brian Hawes, Paul Cielinski, Martha Beitel and Pat Marotto.
- Five employees were trained as Practitioners: Justin Benner, Martha Yeager, Erin VanNostrin, Rachelle O’Neal and Katara West. This training includes overviews of the capabilities of LEADS, administrative and security rules, and authorized use and dissemination of information.
- Michelle Kocian attended eight hours mandatory annual TAC training in Columbus. The material was then provided for our operators to read.
- All training materials such as quarterly LEADS Newsletters were circulated to operators. Training is documented in the form of “read, date & sign”.
- As more LEADS, BCI, NCIC and NLETS information was updated at headquarters, the material was printed and provided to operators. Brand new manuals were created and presented to Pretrial at the Jail location.
- Preparations began to train five Pretrial operators and to convert the terminal at the Jail from Omnixx (telephone line) to Messenger system (internet based).

## **SEALING SPECIALIST**

The Sealing Specialist is responsible for the processing of all sealing applications filed with the Clerk of Courts. The Sealing Specialist schedules and conducts all interviews with sealing applicants and performs all the required research before a written report is prepared for the Court. The guidelines and criteria associated with a sealing request are specifically outlined in the Ohio Revised Code. In 2010, there were 367 applications filed with the Clerk. The Departmental Sealing Specialist completed 431 reports.

## **INTERVENTION IN LIEU OF CONVICTION (IILC)**

Offenders are granted Intervention in Lieu of Conviction with substance abuse treatment ordered by the Court. Upon the successful completion of a treatment program, verification of ongoing sobriety by means of regular random urinalysis testing and the commission of no new offenses, the offenders are eligible for the dismissal of their pending charge.

There are two IILC Officers who supervise a total of 240 IILC cases. In 2010, the unit had 149 new referrals and 228 terminations of which 146 were successful.

## **ASSESSMENTS**

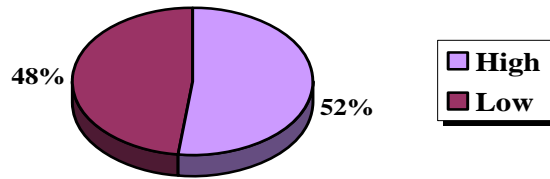
Funded by a grant from the Office of Criminal Justice Services, the Adult Probation Department implemented the Ohio Risk Assessment System (ORAS) – Community Supervision Tool. This tool will serve as the foundation for determining frequency of reporting and case planning starting in 2011.

Information for the instrument is obtained through file review and a structured interview. The instrument consists of 35 items that provide an overview of seven domains which entail the following: criminal history; education, employment and financial situation; family and social support; neighborhood problems; substance use; peer associations; and criminal attitudes and behavioral problems.

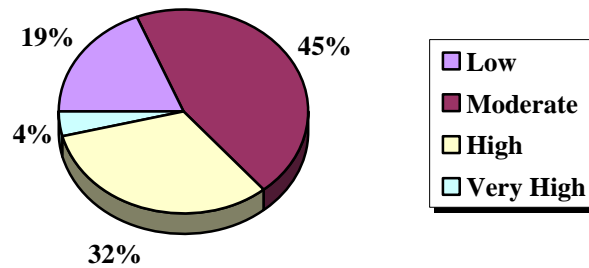


This unit was comprised of one full-time Assessment Officer, Cathy Cherico, and two part-time Assessment Officers, Justin Benner and Erin VanNostran. Ms. VanNostran was replaced by Martha Yeager in March 2010. During the course of 2010, 511 full assessments were completed and 1,009 prescreeners by these officers.

**PRESCREENER SCORES**



**FULL ASSESSMENT SCORES**



**QUALITY AND OUTCOME IMPROVEMENT COMMITTEE**

The Quality and Outcome Improvement Committee was formed in 2008 for the purpose of integrating the use of Evidence Based Practice to improve the quality of services provided to probationers, the Court and community. The goals of the committee are to reduce recidivism and increase public safety, as well as improve the overall efficiency and effectiveness of the Probation Department. In 2010, the committee consisted of thirteen (13) VOLUNTEER members, including the Chief Probation Officer, two (2) Co-chairs, Probation Officers, Support Staff and Unit Supervisors, who formed eight (8) subcommittees: Outcome and Performance Management, Leadership and Change Management, Risk/Needs Assessment and Case Planning, Core Competencies, Violation Responses and Recommendations, Rewards and Sanctions Structure, Alternate Hours and Offender Skill Groups and Department Morale.

In 2010, the main focus and accomplishment of the committee was the training of all Probation Officers in the administration and use of the Prescreener, full Risk/Needs Assessment tool and Case Plan agreements. One probation officer has continued to provide assessment training to other departments throughout the State of Ohio. Additional accomplishments include the implementation of Case Planning and the creation of an Administrative Caseload. Progress has also been made towards the creation of offender skill groups and specific subcommittee goals.

**2010 Committee:**

- Director/Chief Probation Officer: Arian Davis
- Co-chairs (2009- present): Paul Cielinski and Cynthia Schwarz
- Members: Terry Strubbe, Michael Rick, Kelli Anderson, Danielle Sampson, Laurie Fisher, David Siko, Colin Meeker, Kimberly Humphrey, Barb Killian, Martha Beitel.

The Quality and Outcome Improvement Committee’s 2011 agenda continues to include steps towards the full implementation of Evidence Based Practice within the Probation Department.

## **SUPPORT STAFF AND DNA COLLECTION**

Cathy Cherico, Secretary II, was promoted to the full time Assessment Officer position in January 2010. The remainder of the Support Staff group absorbed Cathy's clerical responsibilities, which involved moving a Secretary II into a receptionist position.

The Support Staff personnel, with the assistance of three interns from Brown Mackie College, did an excellent job of covering for the loss of Cathy Cherico in 2010. There were two Support Staff personnel on medical leave in April and June of 2010, and their leave extended for up to nine weeks each.

Support Staff accepted the following additional responsibilities in 2010:

- ❑ Entering Pre-Trial urine drug screens into SCORS.

Support Staff relinquished the following duties during 2010:

- ❑ Entering the Re-Entry notes into SCORS.
- ❑ Mailing sealing interview letters and inquiries.

Ohio law requires that all persons convicted of a felony and/or a qualifying misdemeanor submit a sample of their DNA to the Bureau of Criminal Identification (BCI). Intake personnel perform DNA tests Monday through Friday from 8:30 a.m. until 3:00 p.m. from any and all persons reporting to Intake for the first time, who meet the criteria, and have not previously submitted DNA.

Intake secretary, Barbara Killian, is the primary person responsible for collecting DNA as of January 4, 2010. Christina Hartman, Pat Marotto, Karyn Rogers, Jackie Shannon and Debbie Rians help Barbara collect DNA on an as-needed basis. During June and July of 2010, an Intern from Brown Mackie College was collecting DNA's during Barbara's family medical leave.

In 2010, a total of 984 samples of DNA were collected.

## **INTERNS**

The Adult Probation Department makes regular use of college interns. Students from the University of Akron, Kent State University and Brown-Mackie College worked as interns with the Department in 2010. The Department supports and encourages these college interns by exposing them to all aspects of offender supervision. We have two to three students each semester. Three officers in the Department were interns through this program before joining the Court of Common Pleas and we have had a number of students who have contacted us when they have gone to work with other local corrections agencies. Officer David Siko will leave the position of intern coordinator and Officer Renee Cooper will be the new coordinator.

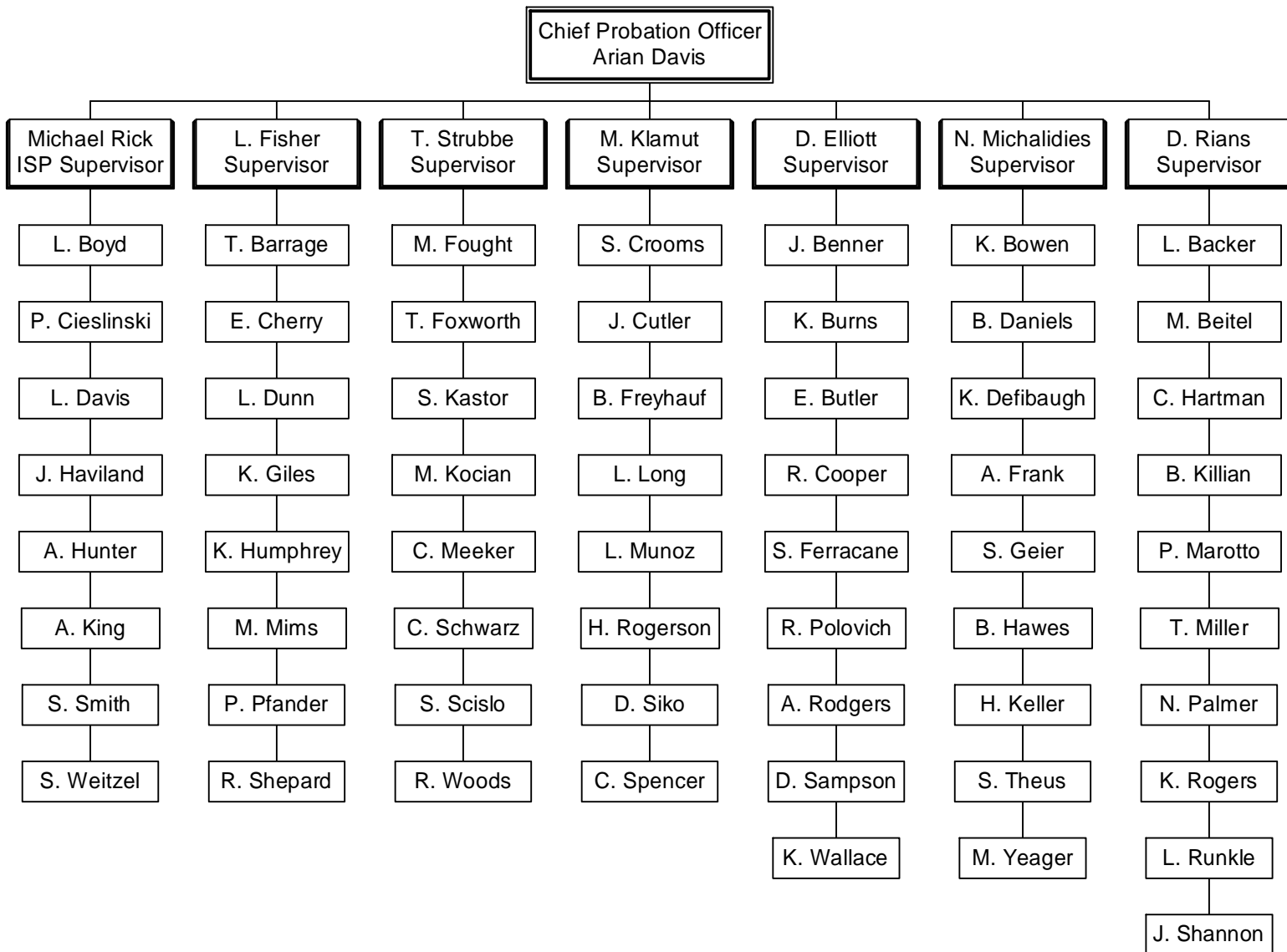
## **SUMMIT COUNTY ADULT PROBATION PERSONNEL**

At the end of 2010, the staff of the Adult Probation Department consisted of the following personnel:

- One Director/Chief Probation Officer
- Seven Managers
- 40 Probation Officers (ISP, IILC, PSI, General, Re-Entry)
- Seven Pretrial Officers
- Two Support Staff Specialists
- Three Assessment Officers (ORAS)
- Ten Clerical Specialists

# Adult Probation Department

Effective 2/7/11



**PERSONNEL ACTIVITY DURING 2010:**

**Additions:** Martha Yeager

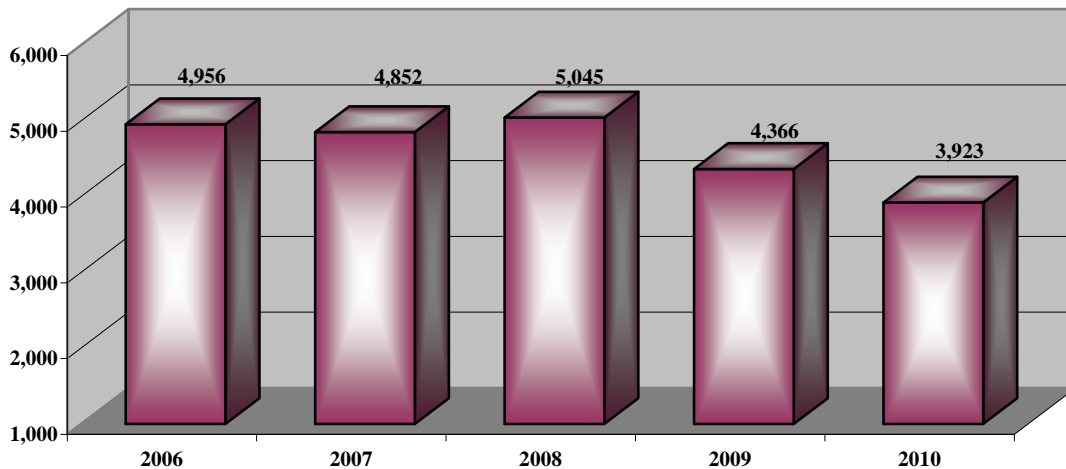
**Separations:** Cathy Cherico, Melinda Masterson, Erin Van Nostran

## PRETRIAL SERVICES 2010 SUMMARY

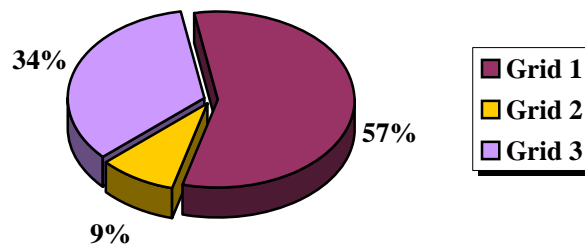
This year the Summit County Pretrial Services program continued to promote pretrial justice through the utilization of a validated risk assessment that is based on a comprehensive investigation of nine indicators of risk and recommendation guidelines for bond.<sup>1</sup> In the event a defendant is released to the community, the Summit County Pretrial Risk Assessment Instrument (SCPRAI) accurately predicts the likelihood that a defendant would fail to appear for court and/or be rearrested pending trial.

In 2010, Pretrial Services completed 3,923 investigations. Approximately 33% (1,290) of those defendants investigated, Pretrial Supervision was a condition of bond. The supervision component of bond is subcontracted to Oriana House, Inc., under the Pretrial Supervision Program. The successful closure rate for those defendants released to the program was 85% in 2010. Nearly 2,300 drug screens were completed of which 14% were positive. For defendants that were on supervision 5% were closed due to failure to appear, 3% due to technical violations and 7% due to new charges.

Pretrial Investigations Five Year Data

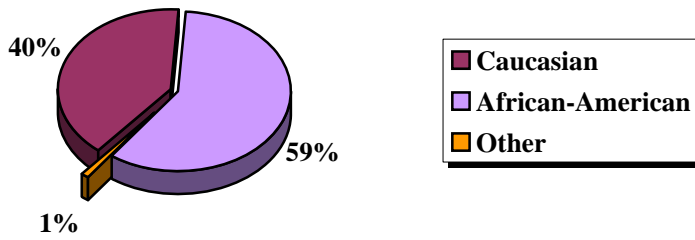


2010 Risk Assessment by Grid

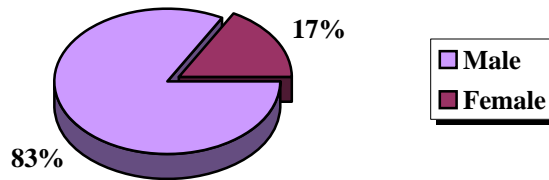


<sup>1</sup> Pretrial Justice-The honoring of the presumption of innocence, the right to bail that is not excessive and all other legal and constitutional rights afforded to accused persons awaiting trial while balancing these individual rights with the need to protect the community, maintain the integrity of the judicial process and assure court appearance. *VanNostrand, Marie and Gena Keebler. "Our Journey Toward Pretrial Justice" in The Journal of Federal Probation, Volume 71, Number 2, (September 2007) pp. 20-25.*

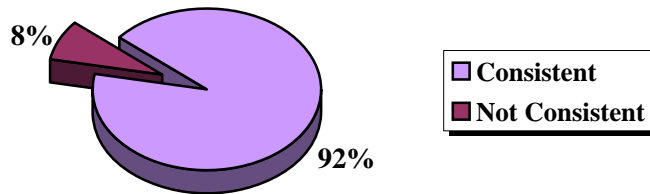
### 2010 Pretrial Investigations by Race



### 2010 Pretrial Investigations by Gender



### 2010 Pretrial Risk Assessment Recommendations Per Guidelines



#### PRETRIAL SERVICES

**First row from left:** Bill Daniels, Shiloh Geier, Ashley Frank, Brian Hawes  
**Second row, from left:** Kelly Bowen, Natalie Michailides-Gelfo – Supervisor  
**Third row, from left:** Helga Keller, Kerri Defibaugh, Stefanie Theus

## PSYCHO-DIAGNOSTIC CLINIC 2010 REPORT

The Psycho-Diagnostic Clinic has been providing quality forensic evaluations for nearly four decades. It is one of ten certified forensic centers funded by the Ohio Department of Mental Health to provide evaluations and testimony pursuant to Ohio Revised Code, Sections 2945.37 through 2945.40. The Clinic is certified by the Ohio Department of Mental Health to serve the Common Pleas Courts of Summit, Stark, Portage, Medina and Geauga Counties. The Clinic also provides other statutory evaluations to Summit County Common Pleas Court through revenue from the Summit County General Fund, including Intervention in Lieu of Conviction, Mitigation of Penalty and Post-sentence evaluations. Through funding by the County of Summit Alcohol, Drug Addiction and Mental Health Services Board the Clinic provides evaluations for the Municipal Courts in Summit County. Evaluations are also provided to other courts on a fee-for-service basis.

In 2010, the Psycho-Diagnostic Clinic underwent several changes. The Clinic hired a Director, Arcangela S. Wood, Psy.D., Clinical Psychologist, and a part-time psychologist, Lynn Luna Jones, Ph.D. Also, Randy Vipperman, LISW-S, joined the Clinic staff and the Intervention In Lieu of Conviction (IILC) evaluations were returned to being the responsibility of the Clinic. In addition, the Clinic remained staffed by a part-time psychology resident, doctoral students in clinical psychology, a forensic mental health specialist, consulting psychologists, and psychiatrists. Clinic staff are profiled in **Table 1**.

### COURT ORDERED EVALUATIONS

The Clinic conducted 576 court-ordered evaluations in 2010. Sixty-four percent (64%) of these evaluations were provided for Summit County Common Pleas Court. Twenty-three percent (23%) were ordered by Stark, Medina, Portage and Geauga County Common Pleas Courts. Ten percent (10%) of Clinic evaluations were completed for Municipal Courts in Summit County. Three percent (3%) of the evaluations were completed for other courts. Clinic referrals by referral source over the past three years are summarized in **Table 2**.

**Table 3** contains a breakdown of referrals to the Clinic by referral type over the past three years. These evaluations include Competency to Stand Trial (37% of referrals), Sanity at the Time of the Act (16% of referrals), and Commitment and Non-secured Status of defendants found Not Guilty by Reason of Insanity or Incompetent-Nonrestorable committed under court jurisdiction (2% of referrals), and Mitigation of Penalty or Post-Sentence evaluations (7% of referrals) during 2010.

In 2010, Intervention in Lieu of Conviction evaluations, referred under Ohio Revised Code Section 2951.041 were conducted by the Clinic. These evaluations accounted for 38% of referrals during 2010.

### RESEARCH AND TRAINING

The Clinic continued to collaborate in research and training activities with the Kent State University Department of Psychology, the Ohio Department of Mental Health and the Northeastern Ohio Universities College of Medicine and Pharmacy (NEOUCOM) in 2010. Two doctoral students from the American Psychological Association (APA)-approved training program in clinical psychology at Kent State University and one post-doctoral psychology resident, provided services under supervision in 2010. Research collaboration with Kent State University and data collection on the MMPI-2-RF were continued in 2010.

Three psychiatry residents from the Northeastern Ohio Universities College of Medicine and Pharmacy Psychiatry Residency program served forensic rotations at the Clinic as part of their training. These future psychologists and psychiatrists provide service to the Clinic and the Courts while receiving valuable professional training.

**TABLE 1**

<b>PSYCHO-DIAGNOSTIC CLINIC STAFF AND CONSULTANTS</b>	
<b>CLINICAL DIRECTOR</b>	Arcangela S. Wood, Psy.D., <i>Illinois School of Professional Psychology</i>
<b>CLINICAL STAFF</b>	Lynn Luna Jones, Ph.D., <i>Temple University</i> Holly Trivett, B.A., <i>University of Akron</i> Randy Vipperman, LISW-S, <i>Case Western Reserve University</i>
<b>PSYCHOLOGY RESIDENT</b>	Curtis A. Mattson, Psy.D., <i>Forrest Institute of Professional Psychology</i>
<b>PSYCHOLOGY ASSISTANTS</b>	Tayla Lee, M.A., <i>Ball State University</i> Ashley Smith, M.A., <i>Kent State University</i>
<b>SUPPORT STAFF</b>	Michelle Longoria Katara West
<b>CONSULTANTS</b>	Galit Askenazi, Ph.D., <i>Case Western Reserve University</i> Michael Biscaro, Psy.D., <i>Xavier University</i> Katie Connell, Ph.D., <i>Alliant International University</i> Thomas Evans, Ph.D., <i>Union Institute and University of Cincinnati</i> Kenneth Gruenfeld, Psy.D., <i>Nova Southeastern University</i> Brian O'Reilly, Ph.D., <i>Kent State University</i> Gary Sales, M.D., J.D., <i>Wright State University and Ohio State University</i> Sherif Soliman, M.D., <i>Ain Shams University</i> Sara West, M.D., <i>University of Virginia</i>

**TABLE 2**

<b>REFERRAL SOURCE</b>	<b>2008</b>	<b>2009</b>	<b>2010</b>
SUMMIT COMMON PLEAS COURT	217	212	370
STARK COMMON PLEAS COURT	66	49	86
MEDINA COMMON PLEAS COURT	20	13	22
PORTAGE COMMON PLEAS COURT	23	18	21
GEAUGA COMMON PLEAS COURT	12	6	3
AKRON MUNICIPAL COURT	32	49	54
STOW MUNICIPAL COURT (FORMERLY CUYAHOGA FALLS)	3	1	1
BARBERTON MUNICIPAL COURT	10	7	4
MEDINA COUNTY MUNICIPAL COURTS	7	5	10
STARK COUNTY MUNICIPAL COURTS	0	3	1
PORTAGE COUNTY MUNICIPAL COURTS	3	0	0
OTHER COURTS	0	5	4
<b>TOTAL</b>	<b>393</b>	<b>368</b>	<b>576</b>

**TABLE 3**

<b>REFERRAL TYPE</b>	<b>2008</b>	<b>2009</b>	<b>2010</b>
COMPETENCY TO STAND TRIAL, ORC SECTION 2945.371 (G)(3)	192	208	211
NOT GUILTY BY REASON OF INSANITY (NGRI), ORC SECTION 2945.371 (G)(4)	99	92	90
INTERVENTION IN LIEU OF CONVICTION, ORC SECTION 2945.041	50	0	218
MITIGATION OF PENALTY, ORC SECTION 2947.06	9	30	36
POST SENTENCE, ORC SECTION 2967.22	24	15	8
NON-SECURED STATUS, ORC SECTION 2945.401	9	16	9
COMMITMENT-NGRI, ORC SECTION 2945.40	7	7	4
SEXUAL CLASSIFICATIONS	3	0	0
<b>TOTAL</b>	<b>393</b>	<b>368</b>	<b>576</b>



## **JURY MANAGEMENT**

Each year, on the first working Monday of August, the Summit County Court of Common Pleas Jury Commissioners perform the annual Jury Draw. Potential jurors are selected from the voter registration list as certified by the Board of Elections from the preceding general election. The annual draw is performed pursuant to O.R.C. Section 2313.06 et seq. Prior to performing the draw, the Presiding Judge designates by order, the number of jurors to be summoned for each court jurisdiction in Summit County, that being Common Pleas Court and Akron, Barberton and Stow Municipal Courts. Furthermore, the Jury Commissioners also draw jurors for Grand Jury pursuant to O.R.C. Section 2313.06 et seq.

From the annual jury list, jurors are drawn for each of the four-month sessions of court within the jury year pursuant to O.R.C. Section 2313.19 et seq. The sessions commence on the first working Monday of September, January and May. The Jury Commissioners, in the presence of the Presiding Judge, the Sheriff and the Clerk of Courts, draw the number of jurors previously designated for that session by the Presiding Judge. Upon completion and recording of the session jury lists, the jurors are summoned, using a one-step summons and questionnaire.

Jurors who receive summonses are asked to return the questionnaire portion providing a certain amount of information. The questionnaire also provides jurors with an opportunity to notify the court that they are eligible for an exemption pursuant to O.R.C. Section 2313.12. Any person eligible for an exemption may waive that exemption. Depending on information provided by the jurors, they may also be excused for a limited number of reasons pursuant to O.R.C. Section 2313.16. The Jury Commissioners are solely responsible for determining which jurors' exemptions are valid and which jurors may be excused.

Effective December 1, 2009, payment of petit juror fees was suspended for the first ten days of service due to limited funding in the County's operating budget. Parking for jurors reporting for Common Pleas Court and Akron Municipal Court jury service is validated at the parking decks noted on their summons and in the pamphlet they receive. Petit jurors who serve more than ten days are paid \$15.00 on the eleventh day and each subsequent day thereafter.

In May 2008, a new Jury Service Orientation DVD was produced.

Since June 6, 2006, jurors have had the convenience of using either our call-in system or our website to access the juror reporting information each evening.

As of October 28, 2002, jurors for Common Pleas Court and Akron Municipal Court service receive an informational brochure included with their summons. This brochure helps to answer many of the commonly asked questions by jurors prior to beginning their service, such as how they are chosen, where to park, appropriate attire, etc.

Beginning May 4, 1999, Grand Jury Service was reduced to a two-month session to ease the burden on people called and to get more county residents involved in the justice system. The process for selecting the Grand Jury from the pool of jurors summoned for each session is governed by Crim. R. 6. Once the Grand Jury is selected, those jurors now serve for two months.

In September 1998, the term of service for Petit Jurors was reduced to one week or one trial. This was done in order to make jury service less of a hardship and to increase participation, due to the recent changes to legislation governing excuses and exemptions. For the 2009-2010 jury year, 40,000 jurors were drawn for Summit County, 10,000 for Akron Municipal Court, 5,000 for Barberton Municipal Court and 6,000 for Stow Municipal Court. These jurors are then divided equally among the three sessions of court and summoned to one week of service within the four-month session to which they were selected.

**Petit Jury Data 2006 thru 2010**

<b>Year</b>	<b>Total Paid</b>	<b>Total Jurors</b>	<b>Average Days</b>	<b>Muni Court Days</b>	<b>Reimbursed By Muni Courts</b>
2006	\$424,560	13,571	3.12	2,137	\$30,460
2007	\$390,868	12,835	3.04	2,224	\$28,580
2008	\$359,125	12,486	2.88	2,029	\$28,660
2009	\$315,337	10,980	2.87	1,420	\$22,954
2010	\$ 1,950	9,627	1.45	1,340	\$ 360*

Municipal Court dollars (2006-2009) represent the amount actually paid as reimbursements for jury fees. The difference between billed and paid is the result of state code violations tried in Municipal Court and for which they do not reimburse jury fees pursuant to ORC 1901.25.

\*Stow Municipal Court only



**PETIT JURY STAFF**

**From left:** Chet Thomas, Ashley Brown, Fran Brooks, Deborah Ruggles - Jury Bailiff



# COUNTY OF SUMMIT COURTHOUSE SECURITY

## SUMMIT COUNTY SHERIFF'S OFFICE

In 2010, the Summit County Sheriff's Court and Special Services Bureau had the responsibility of providing security and prisoner transport for the Summit County Court of Common Pleas. The tables below provide a statistical overview and comparison of the Prisoner Transportation, Incident Reporting, and Security Screening Checkpoints.

<b>PRISONER TRANSPORTATION BY COURT ORDER</b>	<b>2008</b>	<b>2009</b>	<b>2010</b>
<b>Convey To / From Prisons</b>	<b>1,806</b>	<b>1,769</b>	<b>1,821</b>
<b>Convey To Juvenile Facility/Prison</b>	<b>293</b>	<b>250</b>	<b>207</b>
<b>Convey To / From Common Pleas Courts</b>	<b>9,262</b>	<b>8,321</b>	<b>7,497</b>
<b>Convey To / From *Local Facilities/Other County Jails</b>	<b>967</b>	<b>917</b>	<b>1,084</b>
<b>New Prisoners From Court</b>	<b>727</b>	<b>651</b>	<b>1,037</b>
<b>CCTV</b>	<b>2,153</b>	<b>1,902</b>	<b>1,805</b>
<b>TOTALS</b>	<b>15,208</b>	<b>13,801</b>	<b>13,470</b>

2% DECREASE SINCE 2009 (The court is managing prisoner transports to the courthouse by reducing the volume of pretrials and scheduling hearings dates at the time of arraignment. Additionally, some Phase 2 hearings are via CCTV with the prisons.)

\*Local Facilities consist of C.B.C.F., Oriana House, Glenwood Jail, I.B.H., Medical Facilities, Mental Health Facilities, Funerals, Polygraph Exams, or any Court Ordered Transport. In 2008 the local transports were re-assigned to Court & Special Services.

<b>COURTHOUSE INCIDENT REPORT OVERVIEW</b>	<b>2008</b>	<b>2009</b>	<b>2010</b>
<b>Assaults</b>	<b>10</b>	<b>4</b>	<b>9*</b>
<b>Bomb Threat Or Suspicious Package</b>	<b>1**</b>	<b>1*</b>	<b>1**</b>
<b>CPO w/ Weapons</b>	<b>24</b>	<b>28</b>	<b>14</b>
<b>Property Damaging</b>	<b>6</b>	<b>2</b>	<b>1</b>
<b>Disorderly / Menacing</b>	<b>0</b>	<b>2</b>	<b>11***</b>
<b>Domestic</b>	<b>0</b>	<b>4</b>	<b>1</b>
<b>Drugs (Confiscated)</b>	<b>4</b>	<b>1****</b>	<b>2</b>
<b>Fire Alarm</b>	<b>2</b>	<b>7</b>	<b>2</b>
<b>Medical / Illness/ Injury</b>	<b>18</b>	<b>33</b>	<b>9</b>
<b>Misc</b>	<b>45</b>	<b>48</b>	<b>6</b>
<b>Sex Offense</b>	<b>0</b>	<b>1****</b>	<b>1****</b>
<b>Theft / Tampering w/ Records / Forgery</b>	<b>13</b>	<b>6</b>	<b>3</b>
<b>Warrant Arrest By Court Deputy</b>	<b>46</b>	<b>30</b>	<b>18</b>
<b>Counterfeit Money</b>	<b>0</b>	<b>2</b>	<b>0</b>
<b>TOTAL</b>	<b>169</b>	<b>169</b>	<b>78</b>

\* 5 Assaults at Juvenile Detention

\*\* Suspicious Package

\*\*\* 6 Menacing at Juvenile Detention

\*\*\*\*Sex Offense – Dissemination of Matter Harmful to Juveniles - Juvenile Court Security

## SECURITY SCREENING CHECKPOINTS - METAL DETECTORS

Beginning in 2008, the procedures were changed and no unauthorized items were confiscated. Items must be secured by the owner or thrown away.

### 2010 BUILDING ATTENDANCE

<b>MONTH</b>	<b>SAFETY BLDG. &amp; PROBATION</b>	<b>COURTHOUSE</b>	<b>DOMESTIC COURT</b>	<b>JUVENILE COURT</b>
JAN	8,590	29,715	24,019	9,196
FEB	8,659	30,125	23,153	8,611
MAR	8,489	31,265	24,609	11,154
APR	8,654	31,753	22,987	8,981
MAY	8,541	30,699	24,978	9,364
JUNE	8,752	32,467	25,521	10,434
JULY	8,864	32,980	24,567	9,319
AUG	9,015	32,798	25,213	9,485
SEPT	9,125	31,965	26,113	11,070
OCT	9,244	31,672	25,321	11,270
NOV	10,071	32,543	24,987	8,965
DEC	9,935	31,654	24,789	8,200
<b>TOTAL</b>	<b>107,939</b>	<b>379,636</b>	<b>296,257</b>	<b>116,049</b>

\*\* In June of 2008 the Summit County Adult Probation Offices moved permanently to the Safety Building.

**COURT OF COMMON PLEAS GENERAL DIVISION  
2010 FINANCIAL INFORMATION**

**GENERAL FUND ACCOUNTS**

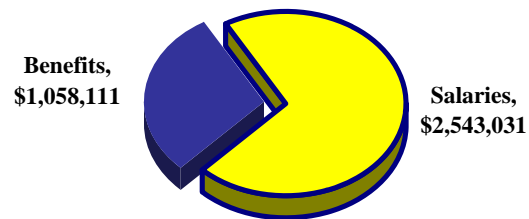
**Court Administration**

Employee Salaries	\$ 3,520,842
Official Salaries	140,000
Benefits	1,315,300
Transcripts	137,070
Visiting Judges	15,053
Attorney Fees	2,372,289
Arbitrator Fees	-
Supplies	27,091
Professional Education	-
Contract Repairs	-
Other Expenses	19,125
Jury Maintenance	5,567
Witness Fees	559
Juror Fees/Court Services	102,000
Equipment	-
Witness Fees (Grand Jury)	662
Juror Fees (Grand Jury)	60,477
<b>Total Administration</b>	<b>\$ 7,716,035</b>

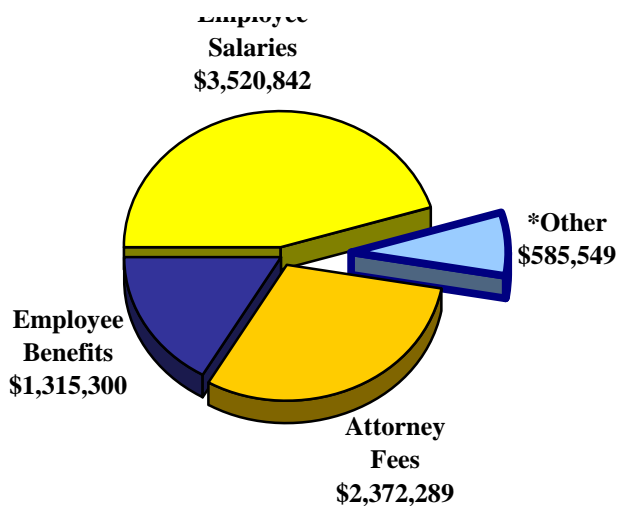
**Adult Probation**

Adult Probation Salaries	\$ 2,543,031
Security Salaries	-
Benefits	1,058,111
<b>Subtotal Adult Probation</b>	<b>\$ 3,601,142</b>
<b>Reimbursements</b>	
Domestic Violence Unit	48,125
<b>Total Adult Probation</b>	<b>\$ 3,553,017</b>

**ADULT PROBATION EXPENDITURES**



**COURT ADMINISTRATION EXPENDITURES**



**\*Other**

Salaries-Officials	\$ 140,000
Transcripts	137,070
Visiting Judges	15,053
Arbitrator Fees	-
Supplies	27,091
Travel	-
Contract Repair	77,945
Other Expenses	19,125
Jury Maintenance	5,567
Witness Fees	559
Juror Fees	102,000
Equipment	-
Witness Fees (Grand Jury)	662
Juror Fees (Grand Jury)	60,477
<b>TOTAL</b>	<b>\$ 585,549</b>

**TOTAL COMMON PLEAS COURT GENERAL FUND EXPENDITURES \$ 11,269,052**

## REVENUE ACCOUNTS 2010

### Legal Research Fund

<b>Revenues</b>	\$	<b>56,313</b>
<b>Expenditures</b>		
Equipment & Services	\$	<b>38,282</b>

### Probation Service Fees

<b>Revenues</b>	\$	<b>322,326</b>
<b>Expenditures</b>		
Equipment, Training & Services	\$	<b>170,788</b>

### Special Projects Fund

<b>Revenues</b>	\$	<b>999,354</b>
<b>Expenditures</b>		
Salaries	\$	318,791
Benefits		81,107
Equipment		162,139
Supplies		7,351
Contracts		125,060
Professional Education		28,729
Voluntary Separation Plan		9,300
	<b>\$</b>	<b>732,477</b>

<b>2010 Revenues</b>	\$	<b>1,377,993</b>
<b>2010 Expenditures from Revenue</b>	\$	<b>941,547</b>
<b>2010 Surplus from Revenue</b>	<b>\$</b>	<b>436,446</b>

## GRANT FUND ACCOUNTS 2010

### Adult Probation

<b>Intensive Supervision</b>		
Salaries	\$	240,359
Benefits		151,395
<hr/>		
<b>Total Grant Adult Probation</b>	<b>\$</b>	<b>391,754</b>

### Psycho-Diagnostic Clinic

<b>ADM Board State Grant</b>		
Salaries	\$	200,850
Benefits		69,894
Consulting Services		117,402
Supplies		6,619
Travel		2,563
Contract Services		149
Liability Insurance		529
Equipment		-
<hr/>		
<b>Total Grant Psycho-Diagnostic</b>	<b>\$</b>	<b>398,006</b>

**COURT OF COMMON PLEAS-GENERAL DIVISION  
2010 ORGANIZATION PERSONNEL ROSTER**

TITLE	NUMBER OF POSITIONS	EMPLOYEE
<b><u>-ADMINISTRATION-</u></b>		
Administrative Specialist	2	Kay Scaffidi Denna Steiner
Arbitration Clerk	1	Cora Dawkins
Assistant Court Executive Officer	1	Robert Gainer
Assistant Chief Court Reporter	1	Terri Sims
Chief Court Reporter	1	Margaret Wellemeyer
Civil Division Manager	1	Cheryl Goldstein
Computer Help Desk	1	Donna Simone
Computer Network Manager	1	Jay Chapman
Court Executive Officer	1	Andrew Bauer
Court Executive Secretary	1	Debra Young
Court Reporter	10	Barbara Day Kristie Gowens Melissa Kaess Gary Maharidge Sandra Maxson Teresa Orlovsky LeAnn Orner Maxine Roberts Eric Smead Kelley Spears
Courtroom Bailiff	10	Kim Arnold Joan Arshinkoff Jill Coleman Shauna Corder Dorianne Denard Michelle Manchester Kenneth Masich Paula McAvinew Thomas McLaughlin Brian Scheetz
Criminal Division Manager	1	Patricia Carillon
Drug Court Liaison	1	Ashley Frank
Human Resource Specialist	2	Monica Prexta-Siko Sue Roszkowski

<b>TITLE</b>	<b>NUMBER OF POSITIONS</b>	<b>EMPLOYEE</b>
Judicial Assistant	10	Jaclyn Darrah Shay Greven Shari Hower Tamara Keefer Kimberly Miller Lillian Mitchell Christopher Piekarski Donna Slack Anna Stormer Bridget Walters
Judicial Attorney	14	Jason Adams Michael Altvater Jennifer Bouhall Matthew Dickinson Janet Dutt Patricia Himelrigh Dawn Humphrys Alan Medvick Michelle Neiman Elizabeth Ann Nemes Kandi O'Connor Matthew Rich Carrie Roush William Wellemeyer
Judicial Secretary	1	Leann Backer
Jury Bailiff Assistant	1	Ashley Brown
Jury Commissioner	2	Frances Brooks Chester Thomas
Jury Department Supervisor/Bailiff	1	Deborah Ruggles
Magistrate	1	John Shoemaker
Magistrate Assistant	1	Sherri O'Brien
Foreclosure Specialist	1	Suzanne Stephens
Mediator	4	Frank Motz Norma Blank Cheryl Hollis Alison Pfeister
Mediation Secretary	1	Lynn Covert



<b>TITLE</b>	<b>NUMBER OF POSITIONS</b>	<b>EMPLOYEE</b>
Secretary II	12	Theresa Caprez Carolyn Deckert LeighAnn Fultz Julie Glinsky Marie Hillis Carol Hoover Melissa Ludwig Polly McEndree-White Joan Mosley Kathy Riehl Theresa Skinner Deborah Smith
Special Projects Officer	1	Ruth Squires
<b><u>-PROBATION DEPARTMENT-</u></b>		
Clerk Typist II	2	Theresa Miller Nancy Palmer
Offender Services Director / Chief Probation Officer	1	Arian Davis
Pretrial Services Supervisor	1	Natalie Michailides
Pretrial Release Officer	7	Kelly Bowen William Daniels Kerri Defibaugh Ashley Frank Shiloh Geier Brian Hawes Stephanie Theus
Probation Officer	39	Kelli Anderson Timothy Barrage Laurie Boyd Elaine Butler Elaine Cherry Paul Cieslinski Renee Cooper Stephanie Crooms Jeffrey Cutler Lisa Davis Lorri Dunn Sandra Ferracane Tiffany Foxworth Brian Freyhau Kristen Giles Jennifer Haviland Kimberly Humphrey Antalene Hunter

TITLE	NUMBER OF POSITIONS	EMPLOYEE
Probation Officer (cont'd)		Shari Kastor Anthony King Lorette Long Melinda Masterson Colin Meeker Michael Mims Lisa Munoz Patricia Pfander Rudolph Polovich Anthony Rodgers Helen Rogerson Danielle Sampson Cynthia Schwarz Scott Scislo Rebecca Shepard David Siko Stacy Smith Clint Spencer Shannon Vaughn Kecia Wallace Robert Woods
Probation Secretary Supervisor	1	Debbie Rians
Probation Supervisor	5	Douglas Elliott Michael Klamut Michael Rick Laurie Ruhman Terry Strubbe
Secretary II	8	Linda Backer Martha Beitel Christina Hartman Barbara Killian Patricia Marotto Karyn Rogers Lee Runkle Jackie Shannon
Support Staff Specialist	3	Cathy Cherico Helga Keller Michelle Fought
Support Staff Specialist Part-Time	2	Justin Benner Martha Yeager
Work Release Coordinator / LEADS Operator	1	Michelle Kocian

<b>TITLE</b>	<b>NUMBER OF POSITIONS</b>	<b>EMPLOYEE</b>
<b><u>-PSYCHO-DIAGNOSTIC CLINIC-</u></b>		
Administrative Secretary	1	Michelle Longoria
Director	1	Arcangela S. Wood, Psy.D.
Forensic Mental Health Specialist	1	Holly Trivett
IILC Assessment Officer	1	Randy Vipperman
Psychology Assistant	1	Danielle Burchett

**DEPARTMENTAL / GROUP PHOTOS OF GENERAL DIVISION PERSONNEL**



**COURT EXECUTIVE OFFICE**

**First row, from left:** Ruth Squires, Kay Scaffidi, Debra Young  
**Second row, from left:** Denna Steiner, Sue Roszkowski  
**Third row:** Monica Prexta-Siko  
**Back row, from left:** Andrew Bauer – Court Executive Officer,  
Robert Gainer – Asst Court Executive Officer

**SUMMIT COUNTY COURT OF COMMON PLEAS, GENERAL DIVISION**

**DEPARTMENTAL/GROUP PHOTOS OF PERSONNEL**



**COURT REPORTERS**

**Front row:** Melissa Kaess

**Second row, from left:** Maxine Roberts, Kelly Spears, Kristie Gowens

**Third row, from left:** Barbara Day, Terri Sims, Eric Smead

**Fourth row, from left:** Peggy Wellemeyer – Chief Court Reporter, Terry Orlovsky, Leann Orner, Sandy Maxson

**Last row:** Gary Maharidge



**COMPUTER DEPT.**

Donna Simone, Jay Chapman – Dept. Manager



**PSYCHO-DIAGNOSTIC CLINIC STAFF**

**Front row, from left:** Michelle Longoria, Holly Trivett  
**Back row, from left:** Jude Chamberlain, Danielle Burchett, Brian O'Reilly - Clinic Director



**ADULT PROBATION – CLERICAL SUPPORT STAFF**

**Seated, from left:** Martha Beitel, Nancy Palmer, Lee Runkle, Christina Hartman  
**Standing, from left:** Theresa Miller, Cathy Cherico, Pat Marotto, **Debbie Rians – Supervisor,**  
Karyn Rogers, Linda Backer, Jackie Shannon.  
**Not pictured:** Barbara Killian



**ADULT PROBATION OFFICERS**

**Seated, from left:** Danielle Sampson, Elaine Cherry, Renee Cooper, Kelli Anderson, Rudy Polovich  
**Standing, from left:** Douglas Elliott – Supervisor, Tony Rodgers, Kecia Wallace, Lisa Munoz, Sandra Ferracane



**ADULT PROBATION OFFICERS**

**Front row, from left:** Laurie Fisher – Supervisor, Rebecca Shepard, Randy Vipperman  
**Middle row, from left:** Elaine Cherry, Ashley Stewart, Kristen Giles, Michelle Fought  
**Back row, from left:** Patricia Pfander, Kimberly Humphrey, Timothy Barrage



**ADULT PROBATION OFFICERS**

**Front row, from left:** Lorri Dunne, Clint Spencer, **Michael Klamut – Supervisor**  
**Second row, from left:** Jeff Cutler, David Siko, Stephanie Crooms  
**Last row, from left:** Helen Rogerson, Shannon Weitzel, Brian Freyhau, Lori Long



**ADULT PROBATION OFFICERS**

**Seated, from left:** Antalene Hunter, Jennifer Haviland, Lisa Davis, Melinda Masterson  
**Standing, from left:** Paul Cieslinski, Stacy Smith, Mike Rick – Supervisor, Laurie Boyd, Michael Mims, Tony King



**ADULT PROBATION OFFICERS**

**First row, from left: Tiffany Smith, Michelle Fought**

**Second row, from left: Shari Kastor, Scott Scislo**

**Third row, from left: Cynthia Schwarz, Terry Strubbe – Supervisor**

**Last row, from left: Colin Meeker, Robert Woods**

**PHOTO NOT AVAILABLE:**

**Arian Davis – Offender Service Director / Chief Probation Officer**

