

2003

ANNUAL REPORT



SUMMIT COUNTY
COMMON PLEAS COURT
GENERAL DIVISION

2003 ANNUAL REPORT

COUNTY OF SUMMIT COURT OF COMMON PLEAS GENERAL DIVISION

JAMES E. MURPHY
Administrative Judge

JUDGE JANE BOND
JUDGE PATRICIA A. COSGROVE
JUDGE JUDY HUNTER
JUDGE MARVIN A. SHAPIRO

JUDGE MARY F. SPICER
JUDGE BRENDA BURNHAM UNRUH
JUDGE JAMES R. WILLIAMS

ANDREW J. BAUER
Court Executive Officer

TABLE OF CONTENTS

	Page
Letter to Citizens of Summit County	1
Judges of the Court of Common Pleas - General Division	2
Table of Organization	6
Staff of the Court of Common Pleas - General Division.	7
Civil Case Activity/Supreme Court Annual Report 2003.	8
Monthly Comparison of Civil Filings/Terminations 2003.	9
Six Year Comparison of Civil Filings/Terminations	9
Criminal Case Activity.	10
Five Year Comparison of Criminal Filings/Arraignments/Terminations.	12
Arbitration	13
Visiting Judges	13
Mediation	13
Magistrate.	14
Felony Drug Court	15
Pre-Trial Release	16
Adult Probation Department.	17
Psycho-Diagnostic Clinic	22
Jury Management.	26
Court Security.	27
Court of Common Pleas 2003 Operating Expenditures.	28

A MESSAGE FROM THE ADMINISTRATIVE JUDGE

On behalf of the Judges of the Court of Common Pleas, I wish to take this opportunity to thank you for the interest in our Court.

In the year 2003, our judges had the highest caseload in the state. We have disposed in the General Division of over 12,480 civil and criminal cases.

In addition, we have:

- 1 Expanded alternative jail programs;
- 2) Added probation officers;
- 3) Our Community Based Correction Facility has won outstanding marks from the American Correctional Association and the Correctional Accreditation Association of Ohio; and
- 4) Added a Drug Court.

We will continue to improve the efficiency of our Courts with the cooperation demonstrated by our County Executive and Council and all of the citizens we serve.

James E. Murphy
Administrative Judge

THE HONORABLE JAMES E. MURPHY

Judge Murphy graduated from Notre Dame as an Accounting Major in 1953. He was employed by a CPA firm for two years. He then served as Assistant Administrator of St. Thomas Hospital until graduating from The University of Akron School of Law in 1962. He was admitted to the Bar that same year.

Judge Murphy served as Assistant Summit County Prosecutor in 1963 and 1964, and entered private practice until being appointed Akron Municipal Court Judge in October 1980. He was elected in 1981 in that position and then appointed to the Summit County Court of Common Pleas in January 1983 and elected in 1984, and to full terms in 1988, 1994 and 2000.

Judge Murphy is a member of the Ohio and Akron Bar Associations, and the American Judges Association.

Judge Murphy served as the Administrative Judge of the General Division of Common Pleas Court for the 1985 term and as Presiding Judge for six sessions of court and was elected Administrative Judge for 2003 and 2004.



THE HONORABLE JANE BOND

Judge Jane Bond earned a bachelor of science in journalism from Ohio University, graduating in 1968 with honors. She received a law degree in 1976 from The University of Akron and was admitted to the Ohio Bar.

Judge Bond entered the private practice of law in 1977 and served as an Assistant Summit County Prosecutor. In 1981, she became General Counsel for the County Executive in the first county-chartered government in Ohio.

In February 1989, Judge Bond was appointed Judge of Akron Municipal Court and was elected to that position in November 1989. In January of 1991, she was appointed to the Summit County Court of Common Pleas and elected in 1992, 1994, and 2000.

THE HONORABLE PATRICIA A. COSGROVE

Judge Cosgrove received her B.A. from The University of Akron in 1974 and was the recipient of the Akron University Alumni Scholarship. She received her Juris Doctorate Degree from The University of Akron and was admitted to the Ohio Bar in 1978. While working her way through school, Judge Cosgrove served as a Law Clerk for the Ninth District Court of Appeals.

From 1978 to 1980, Judge Cosgrove served as Assistant Akron Law Director. She was a Senior Assistant Summit County Prosecutor in the Criminal Trial Division from 1981 to 1991. She also maintained a private law practice. Judge Cosgrove later served as Chief Counsel of the Civil Division of the Summit County Prosecutor's office. In 1993, she was appointed to the Summit County Court of Common Pleas, elected in 1994 and re-elected in 2000.

Judge Cosgrove served as the Administrative Judge of the Common Pleas Court, General Division, in 1995 and 1996 and as Presiding Judge for two sessions. Judge Cosgrove has been active in community organizations such as the Victim Assistance Program, Community Drug Board Foundation and the Akron Bar Association.

Judge Cosgrove has served as President of the Scanlon Inn of Court, a professional organization that is dedicated to mentoring new lawyers.



THE HONORABLE JUDY HUNTER

Judge Hunter graduated from Ohio State University and later earned her Juris Doctor degree from The University of Akron School of Law. Judge Hunter worked in the private sector engaged in the general practice of law from 1978 to 1990. Prior to becoming a lawyer, Judge Hunter taught school. Past public service includes serving as elected Clerk of the Akron Municipal Court from 1991-1995.

Judge Judy Hunter currently serves as Judge in the General Division of the Summit County Common Pleas Court where she was appointed by Governor Bob Taft on April 26, 2003 to fill the vacancy created when Judge John Adams was appointed to the Federal Bench. Judge Hunter's past judicial service includes a term as Judge on Summit County's Juvenile Court from 1996-2002.

Judge Hunter is active in the community, having served on many boards and committees, including serving as President of the Board of Trustees of The Goodwill Industries of Akron, Ohio. Judge Hunter belongs to various professional organizations including the American, Ohio, and Akron Bar Associations and the Ohio Association of Common Pleas Judges. Judge Hunter has been a frequent speaker at educational forums and community events.

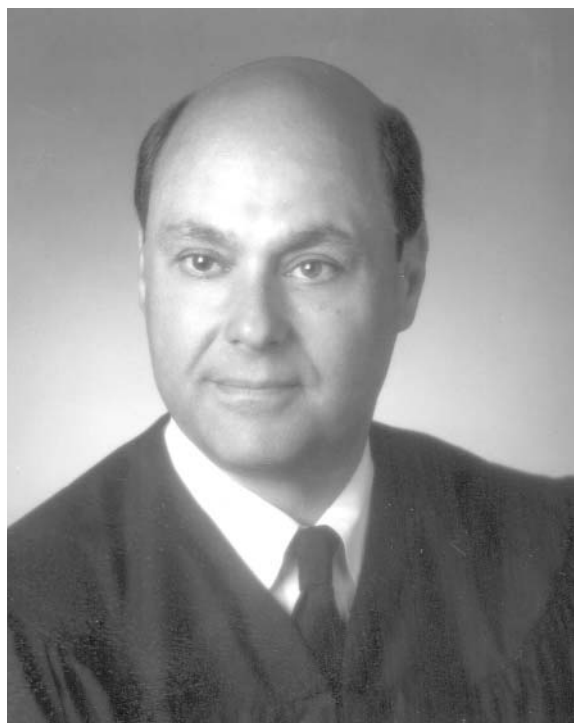
Special awards include the Community Health Center's 1999 Friend of the Field Award, the 2002 Urban Light Award from the Department of Public Administration at the University of Akron, and a January 2000 award from the Better Business Bureau for "vision and innovative leadership in establishing the most successful conflict resolution mediation program in Summit County".

THE HONORABLE MARVIN A. SHAPIRO

Judge Marvin A. Shapiro graduated from The University of Akron with a Bachelor of Arts degree in 1960. He thereafter received a Juris Doctorate degree from The University of Akron in 1965 and was admitted to the Ohio Bar the same year.

Judge Shapiro served as an assistant City of Akron prosecutor, assistant Summit County prosecutor and an assistant Ohio Attorney General and engaged in private practice between 1965 and 1991.

In January 1991, Judge Shapiro was appointed Judge of Akron Municipal Court and was elected to that position in November 1991 and re-elected in 1993 and 1999. During his tenure in Akron, he was the Drug Court Judge 2000-2003. In November 2002, Judge Shapiro was elected Summit County Common Pleas Judge with the term beginning May 1, 2003.



THE HONORABLE MARY F. SPICER

Judge Spicer received her B.A. from Heidelberg College in 1958, her M.A. from the University of Chicago School of Social Service Administration in 1960 and her J.D. from The University of Akron School of Law in 1965. She was admitted to the Bar in 1965.

Judge Spicer was in the private practice of law with her father F.W. Spicer, from 1965 to 1975, when she was appointed as Referee in the Summit County Court of Common Pleas, Probate Division. In Probate Court, she also served as Director of Human Services. She was elected as Judge of the Court of Common Pleas in 1984, and re-elected in 1990, 1996 and 2002.

Judge Spicer served as the Administrative Judge of Common Pleas Court, General Division, in 1987 and as Presiding Judge for many sessions and will be the Presiding Judge for the year 2004. Judge Spicer presides over the Felony Drug Court in this Court of Common Pleas.

Judge Spicer is a member of the Akron, Ohio, and American Bar Associations, as well as community and other professional and charitable organizations.

THE HONORABLE BRENDA BURNHAM UNRUH

Judge Burnham Unruh earned a bachelor's degree from Wheaton College in 1980, graduating with honor. She received a law degree in 1984 from the University of Akron School of Law.

Judge Burnham Unruh was admitted to the Florida Bar in 1984 and was in private practice in Florida until she returned to Ohio. She was admitted to the Ohio Bar in 1992.

Judge Burnham Unruh was the Coordinator of the Summit County Juvenile Court Guardian Ad Litem program from 1992-1993. In 1993, Judge Burnham Unruh joined the Summit County Prosecutor's Office as an Assistant Prosecutor. She served first in the Juvenile Division and then in the Criminal Division.

In 1997, Judge Burnham Unruh was appointed as a Magistrate in Juvenile Court.

In July of 1998, Judge Burnham Unruh was appointed to the Akron Municipal Court. In March 1999, Judge Burnham Unruh was appointed to the Summit County Court of Common Pleas. Judge Unruh was elected to the Court in 2000 and 2002.

Judge Burnham Unruh is a member of the Akron and Ohio Bar Associations and is active in many community activities.

Judge Burnham Unruh is married to Robert Unruh and has a son and daughter.



THE HONORABLE JAMES R. WILLIAMS

Judge Williams received his B.A. degree from The University of Akron in 1960 and his J.D. in 1965. He was admitted to the Bar in 1965. He has attended the National Judicial College.

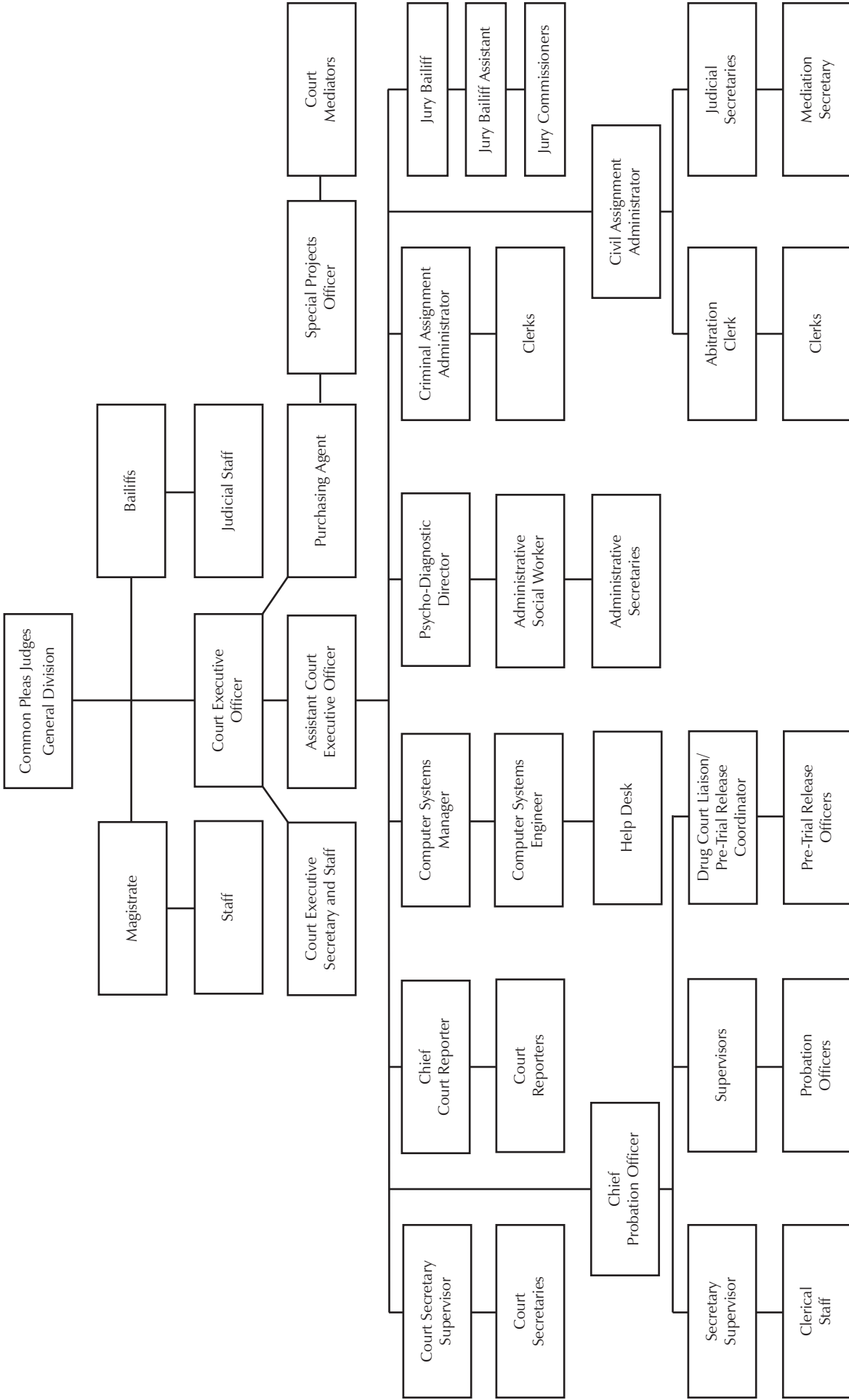
Judge Williams was in the private practice of law with the firm of Parns, Purnell, Stubbs, and Williams before his appointment by President Jimmy Carter as U.S. District Attorney for Northern Ohio in 1978. He returned to private practice of law with the firm of Guren, Merritt, Feibel, Sogg, and Cohen in 1982 before his appointment as Judge of the Akron Municipal Court in 1983. He was elected to that Court in 1985 and again in 1987.

Judge Williams was appointed to the Summit County Court of Common Pleas in February of 1989 and elected in 1990 to serve the unexpired term. He was elected to full terms in 1992 and 1998.

Judge Williams is a member of the Akron Bar, Ohio Bar, and American Bar Associations. He is a past President of the Common Pleas Judges Association of Ohio and also a past member of the Ohio Supreme Court's Board of Commissioners on Grievances and Discipline.

Judge Williams served one term in 1991 as Administrative Judge and four sessions as Presiding Judge, including the 1998 session.





2002 ORGANIZATION PERSONNEL ROSTER

	Number			Number	
Title	Positions	Employees	Title	Positions	Employees
Administration:					
Administrative Specialist	2	Kay Scaffidi Denna Steiner			Joan Mosley Barbara Nikola Phyllis Redman Debra Young Ruth Squires
Administrative Specialist/HR	1	Jennifer Parks	Special Projects Officer	1	
Arbitration Clerk	1	Cora Dawkins	Probation Department:		
Assistant Court Exec. Officer	1	Robert Gainer	Clerk-Typist I	2	Theresa Miller Nancy Palmer Janet Long
Chief Court Reporter	1	Janet Krulock	Clerk-Typist II	1	
Civil Assignment Admin.	1	Cheryl Goldstein	Offender Services Director (Interim)	1	James Ward
Computer Help Desk	1	Donna Simone	Pre-Trial Release Officer	4	Kelli Blue Marc Cunningham Kerri Cushing Steve Urbon
Computer Network Manager	1	Jay Chapman			
Computer Systems Engineer	1	James Rafferty	Probation Officer	34	Kelly Anderson Laurie Boyd Elaine Butler Renee Cooper Jeffrey Cutler Lisa Davis Lorri Dunn Douglas Elliott Laurie Fisher Brian Freyhauf James Gibbons Shay Greven Jennifer Haviland Shari Kastor Anthony King Michael Klamut Sasa Maric Lesley Martin Michael Mims Patricia Pfander Rudolph Polovich Michael Rick Anthony Rodgers Helen Rogerson Cynthia Schwarz Rebecca Shepard David Siko Ronald Smith Ernest Stallworth Kecia Wallace Karen Weletyk Barbara Wesig Jean White Robert Woods Sue Roszkowski
Court Executive Officer	1	Andrew Bauer			
Court Executive Secretary	1	Edna Glinsky			
Court Reporter	11	Barbara Day Kristie Gowens Maxine Hosch Patricia Klein Thomas Lazar Gary Maharidge Sandra Maxson Teresa Orlovsky LeAnn Ross Terri Sims Peggy Wellemeyer			
Court Secretaries' Supervisor	1	Polly McEndree-White			
Courtroom Bailiff	8	Janet Ciotola Jill Coleman Kenneth Masich Thomas McLaughlin Alys Pearson Marvin Rasberry Rose Yovanovich Caroline Zito Patricia Carillon			
Criminal Assignment Admin.	1				
Drug Court Liaison/ Pretrial Coordinator	1	Doug Jenney			
Judicial Assistant	8	Kelly Christie Traci Cirullo Todd Connell Matthew Dickinson Kim Miller Deborah Mills Kathie Nelson Shana Schweikert			
Judicial Attorney	12	Alisa Ballard-Dunlap Marilyn Childress Janet Dutt Christine Hill Dawn Humphrys Joann Leong Michelle Neiman Kandi O'Connor Deanna Sinn Susie Steinhauer Suzanne Stephens David Watson	Probation Secretary Supervisor	1	Sue Roszkowski
Judicial Secretary	2	Diane Edwards Cynthia Maxson	Probation Supervisor	3	Arian Davis Saverio Lijoi Terry Strubbe Linda Backer Martha Beitel Judy Campbell Lynn Carpenter Christina Hartman Tamara Keefer Barbara Killian Patricia Marotto Debora Rians Karyn Rogers Lee Runkle Jackie Shannon George Harper
Jury Bailiff Assistant	1	Monica Prexta			
Jury Commissioner	2	Mickey Rhoades Chester Thomas	Secretary II	12	
Jury Department Spvsr/Bailiff	1	Deborah Ruggles			
Magistrate	1	John Shoemaker			
Mediator	2	Burton Jones Frank Motz Lynn Harper	Special Activities Manager	1	
Mediator Secretary	1	Corinne Sanders	Work Release Coordinator/ LEADS Operator	1	Michelle Kocian
Purchasing Agent	1	Helga Cursio	Psycho-Diagnostic Clinic		
Secretary I	5	Julie Glinsky Susann Heimbaugh Carol Hoover Theresa Skinner	Administrative Secretary	2	Paula McAviney Arra Robinson Joanne Arndt Jody Pickle Kathleen Stafford, Ph.D. Brian O'Reilly Linda Petroskey
Secretary II	6	Evelyn James Kay Kinker	Administrative Social Worker	1	
			Clinical Psychologist	1	
			Director	1	
			Psychology Assistant	2	

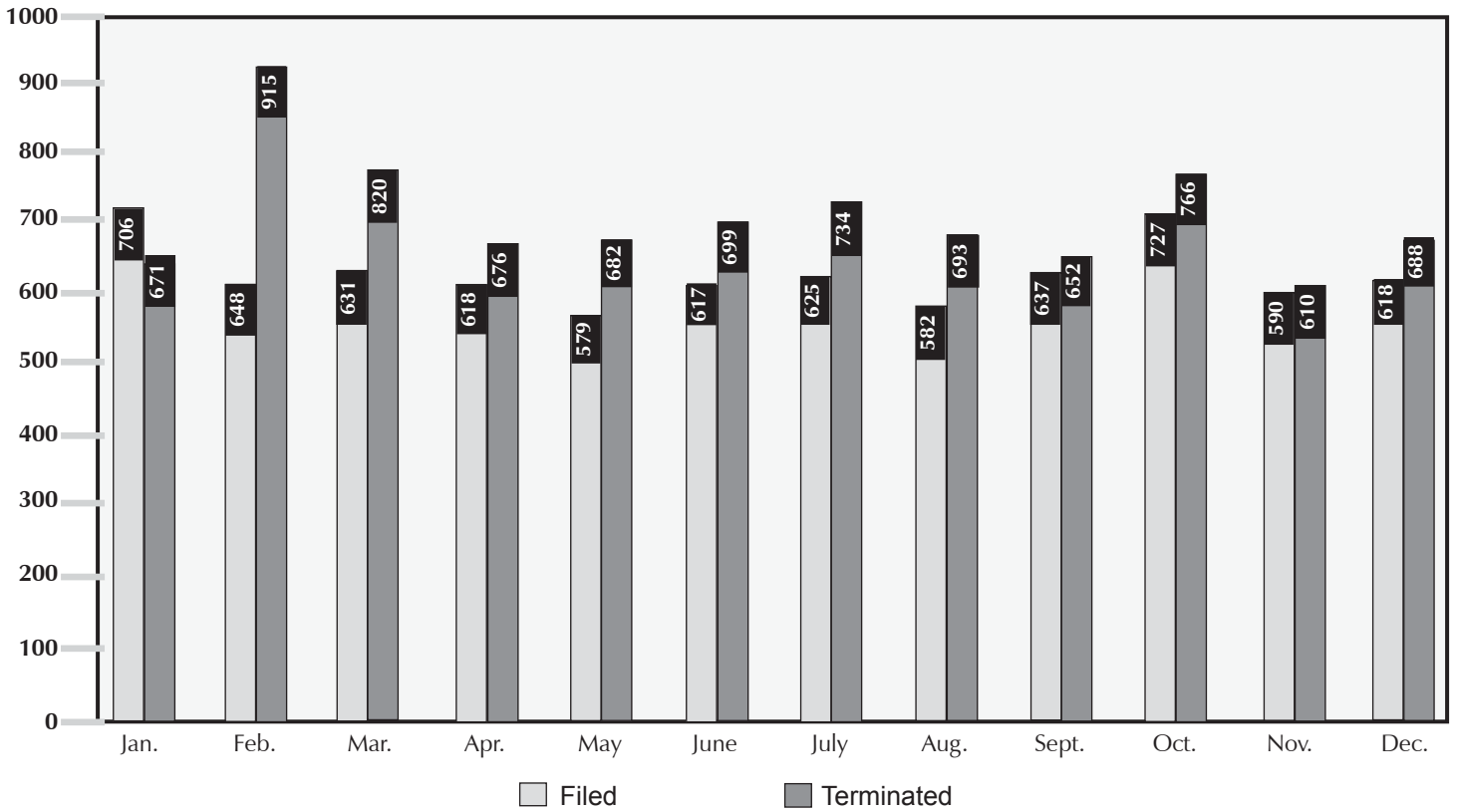
CIVIL CASE ACTIVITY

The 7,578 civil cases filed in 2003 show an increase of 80 cases or 1.1% percent above the 7,498 cases filed in 2002. Civil cases terminated in 2003 of 8,606 show an increase of 895 cases or 10.4 percent above the 7,711 cases that were terminated in 2002. In 1998 the number of new case filings was 5,144 compared to 7,578 cases filed in 2003 which show an increase of 47.3 percent or 2,434 cases in total. Civil terminations have increased from 5,975 in 1998 to 8,496 in 2003, which represents an increase of 2,521 terminated cases or 42 percent. The average civil caseload per Judge was 414 on December 31, 2003, compared to an average civil caseload per Judge of 539 in 2002.

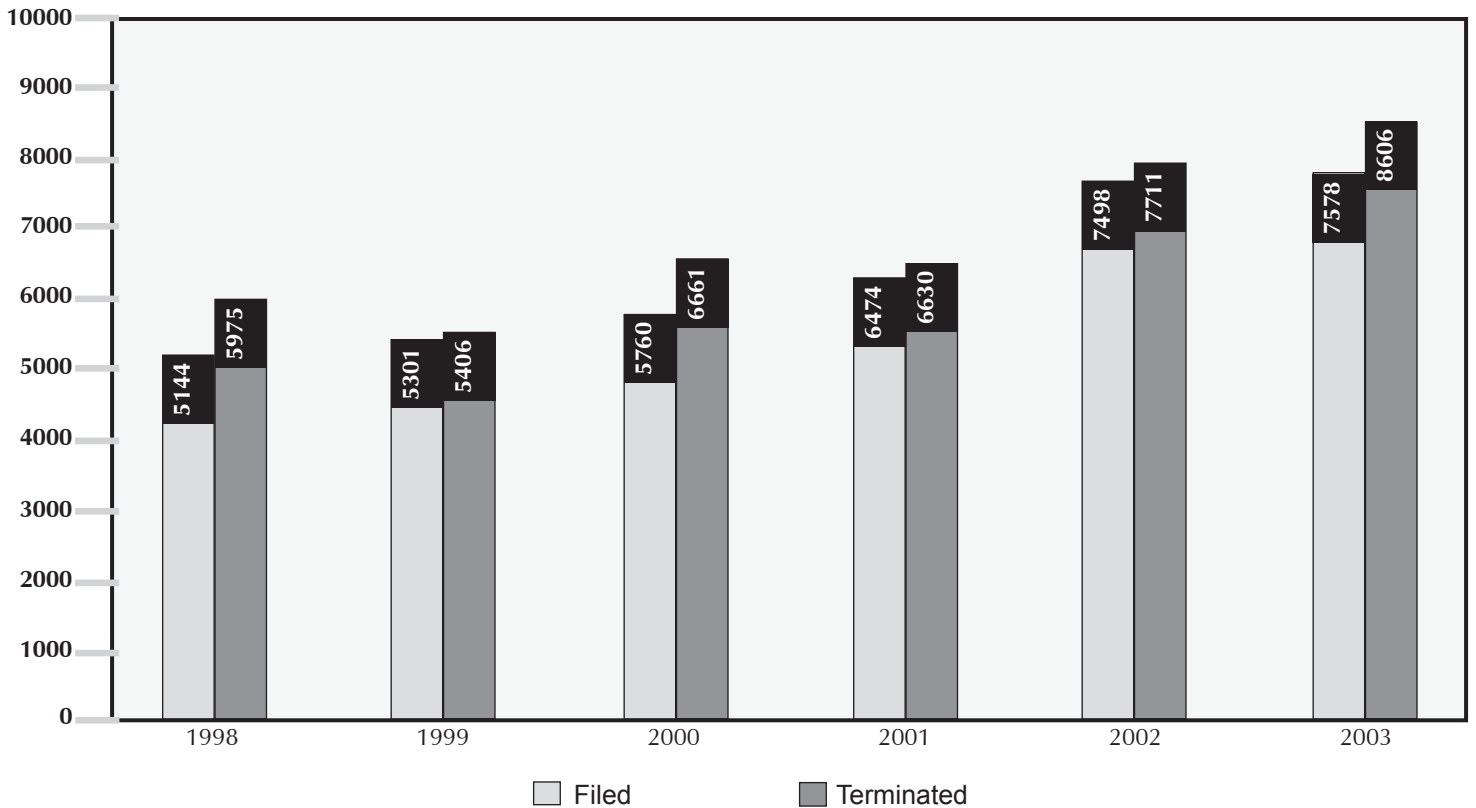
Summit County - Court of Common Pleas - General Division 2002 Annual Report											
TYPE OF CASE	Professional Tort	Product Liability	Other Torts	Workers Compensation	Foreclosures	Administrative Appeal	Complex Litigation	Other Civil	Criminal	TOTAL	Visiting Judges
Pending beginning of period	177	12	1144	419	388	3	2	1262	747	4154	63
New cases filed	134	11	1298	447	3352	72	X	2103	4222	11639	161
Cases transferred, reactivated or redesignated	55	3	199	228	269	14	2	211	423	1404	354
TOTAL	366	26	2641	1094	4009	89	4	3576	5392	17197	578

TERMINATIONS BY:											
Jury trial	19	0	56	4	0	0	0	25	113	217	1
Court trial	0	0	1	0	0	7	0	14	11	33	0
Settled or dismissed prior to trial	89	8	704	198	168	8	2	570	7	1754	0
Dismissal	47	2	261	89	593	10	0	382	214	1598	88
Dismissal for lack of speedy trial (criminal) or want of prosecution (civil)	4	0	24	2	56	0	0	41	0	127	0
Magistrate	0	0	6	0	3	2	0	71	X	82	0
Diversion or arbitration	3	0	145	45	20	0	0	56	69	338	1
Guilty or no contest plea to original charge (criminal); Default (civil)	1	0	22	17	1939	2	0	594	1599	4174	0
Guilty or no contest plea to reduced charge	X	X	X	X	X	X	X	X	2025	2025	0
Unavailability of party for trial or sentencing	0	0	0	0	0	0	0	0	464	464	0
Transfer to another judge or court	36	3	153	74	62	6	0	175	32	541	0
Referral to private judge	0	0	0	0	0	0	0	0	0	0	0
Bankruptcy stay or interlocutory appeal	0	1	27	4	375	2	0	105	0	514	0
Other terminations	14	0	142	265	405	23	1	312	17	1179	6
TOTAL	213	14	1541	698	3621	60	3	2345	4551	13046	96
PENDING END OF PERIOD	153	12	1100	396	388	29	1	1231	841	4150	482

Civil Filings and Terminations for 2003 - Monthly Comparison



Comparison of Filings/Terminations for Past Six Years

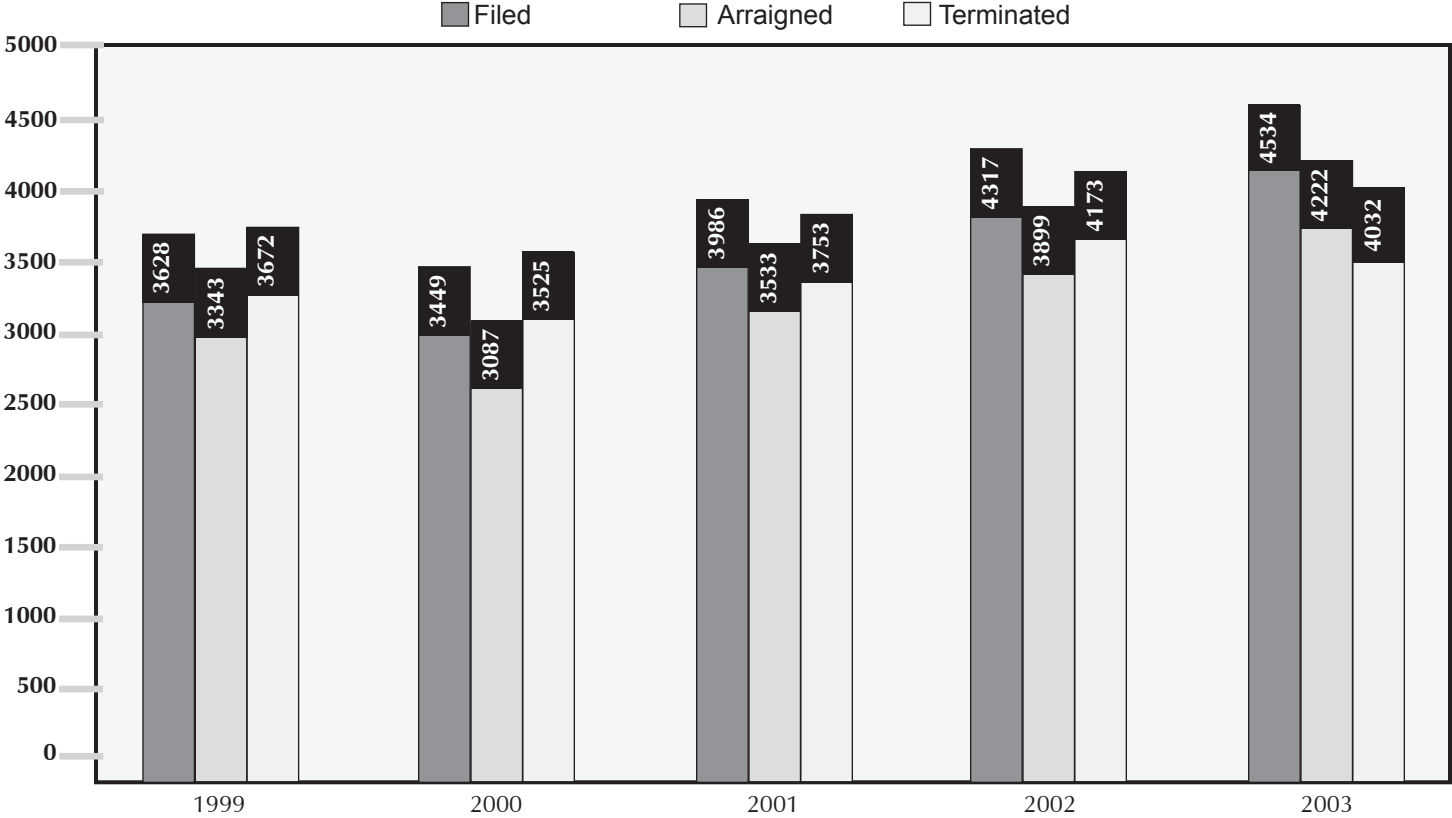


CRIMINAL CASE ACTIVITY

	1999	2000	2001	2002	2003
CASES FILED	3,628	3,449	3,986	4,317	4,534
CASES ASSIGNED/ARRAIGNED	3,343	3,087	3,533	3,899	4,222
CASES TERMINATED	3,672	3,525	3,753	4,173	4,032
TRIALS:					
Jury	99	87	104	106	112
Court	12	11	13	13	8
FELONY CHARGES:					
Filed	n/a	n/a	n/a	n/a	8,704
Convictions	3,684	3,419	3,688	4,337	4,052
Dismissals	3,236	3,742	2,236	2,776	3,284
MISDEMEANOR CHARGES:					
Filed	n/a	n/a	n/a	n/a	2,981
Convictions	913	810	936	1,024	1,029
Dismissals	1,357	1,047	1,315	1,677	1,834
DISPOSITIONS:					
Ohio Dept. of Rehabilitation	945	908	874	1166	1167
Ohio State Reform. For Women	103	120	111	137	115
Community Control	1779	1644	1922	2015	1937
Probation	*Combined with Comm. Control	*Combined with Comm. Control	*Combined with Comm. Control	*Combined with Comm. Control	389
Summit County Jail	75	65	60	56	52
Suspended Sentence	23	31	32	44	32
Dismissals	218	284	214	205	186
Fine/Costs	12	52	9	12	18
Transfer to Another County	0	0	1	1	0
IILC Completion	n/a	n/a	n/a	54	40
PDP Completion	n/a	n/a	n/a	30	64
Not Guilty Verdicts (Trials)	24	14	26	20	28
NGRI	2	2	5	4	4

	1999	2000	2001	2002	2003
CHARGE/PLEA STATISTICS:					
<i>Pled Guilty - Original Charge</i>					
- Felonies	n/a	n/a	n/a	n/a	3,975
- Misdemeanors	n/a	n/a	n/a	n/a	652
<i>Pled Guilty - Amended Charge</i>					
- Felonies	n/a	n/a	n/a	n/a	1,313
- Misdemeanors	n/a	n/a	n/a	n/a	19
<i>Pled No Contest</i>					
- Felonies	n/a	n/a	n/a	n/a	14
- Misdemeanors	n/a	n/a	n/a	n/a	10
<i>Merged Counts</i>					
- Felonies	n/a	n/a	n/a	n/a	1
- Misdemeanors	n/a	n/a	n/a	n/a	1
<i>Dismissals</i>					
- Felonies	3,236	3,742	2,236	2,776	3,284
- Misdemeanors	1,357	1,047	1,315	1,677	1,834
<i>Jury Verdict - Guilty</i>					
- Felonies	150	114	86	123	161
- Misdemeanors	25	17	34	24	40
<i>Jury Verdict - Not Guilty</i>					
- Felonies	78	53	62	65	104
- Misdemeanors	7	5	11	12	9
<i>Court Verdict - Guilty</i>					
- Felonies	8	19	5	14	8
- Misdemeanors	2	7	6	3	6
<i>Court Verdict - Not Guilty</i>					
- Felonies	8	2	13	9	0
- Misdemeanors	1	2	1	3	0
<i>Court Verdict - NGRI</i>					
- Felonies	n/a	n/a	n/a	n/a	6
- Misdemeanors	n/a	n/a	n/a	n/a	0
MOTIONS FOR JUDICIAL RELEASE	739	735	626	803	858

FIVE YEAR COMPARISON OF CRIMINAL CASES FILED, ARRAIGNED, AND TERMINATED



ARBITRATION CASES

In 2003 the Court had 157 cases referred to Rule 10 Arbitration which was a decrease of 27 cases below the previous calendar year. There were 85 cases arbitrated and 59 cases settled before hearing. Appeals De Novo were filed for 32 cases which were 38% percent of the cases heard. A total of 20 cases were appealed and settled. There were 8 cases filed for appeal by plaintiffs and 24 by defendants. The total cost for Arbitration during 2003 was \$22,970.00. The Court has 400 attorneys on the volunteer arbitration list who spend an average of 3.0 hours on each hearing.

VISITING JUDGES

In 2003 the Summit County Common Pleas Court General Division continued its use of visiting judges to assist with the caseload. The Court used active and retired judges to preside over a total of 192.5 days during 2003.

Cost of Visiting Judges		
Payment by County		\$20,187.00
Payment by State		\$71,178.40
	Total	\$91,365.40

The following judges presided over cases for the court during 2003:

Mary Cacioppo, 9th District Court of Appeals(retired)
 Joseph Cirigliano, 9th District Court of Appeals (retired)
 William F. Chinnock, Cuyahoga County (retired)
 Judith Cross, Medina, County Common Pleas Court(retired)
 Thomas P. Curran, 8th District Court of Appeals(retired)
 Joyce J. George, 9th District Court of Appeals(retired)
 Roger G. Lile, Tuscarawas County (retired)
 Richard Markus, 8th District Court of Appeals(retired)
 John R. Milligan, 5th District Court of Appeals(retired)
 Glen B. Morgan, Summit County Common Pleas Court(retired)
 Ted Schneiderman, Summit County Common Pleas Court(retired)

MEDIATION

In June of 1998 the Court began to offer court-sponsored mediation to parties who have filed suit in Common Pleas Court. Frank Motz and Burton Jones, the Court Mediators, mediate cases assigned to them by the General Division Judges. Cases which can be assigned to mediation include personal injury, business disputes, workers' compensation, foreclosure, quiet title, and non-payment of student loans. Cases can be selected by the assigned judge or can be sent to mediation because all of the parties have consented. In 2003, 609 cases were settled after referral to mediation.

Mediation Statistics	1998*	1999*	2000	2001	2002	2003
Cases Pending Beginning of Year	--	44	117	251	304	321
Cases Referred	169	330	805	970	1092	1265
Returned to Court	73	140	236	288	320	364
Cases Settled	52	124	416	495	575	609
Removed prior to completion	--	--	35	147	185	191
Cases Pending End of Year	44	110	235	291	316	430

* Program started June 1998. Statistics for six months only.

MAGISTRATE

John Shoemaker, the Chief Magistrate for the General Division, has served the Court for seventeen years. The Magistrate assists the General Division Judges by handling a variety of civil matters assigned to him via general and limited orders of reference. Under Civil Rule 53, the Magistrate can preside over bench and jury trials, and can handle any matters preliminary to litigation. In 2003, as part of his civil duties, the Magistrate presided over 22 trials: 7 jury trials and 15 bench trials.

Under ORC 2903.214, effective 1998, persons are authorized to petition the Court for an anti-stalking civil protection order. The Magistrate has received references on the majority of these petitions. The Magistrate conducted ex parte and full hearings on 52 such petitions during 2003.

Under Criminal Rule 19, the Magistrate can perform some criminal tasks. The Magistrate conducts all arraignments for the General Division Judges. The video arraignment procedure which commenced in 1998 continues. Out of a total of 5645 Defendants arraigned in 2003, 2683 incarcerated inmates were arraigned by video closed circuit television.

MAGISTRATE'S 2003 STATISTICS		CIVIL CASE ACTIVITIES:		2003
CASES:	2003	Bench Trials		15
		Jury Trials		7
Pending Jan 1	125	Oral Hearings		197
Referred	647	Status Conferences		<u>417</u>
Closed	<u>(698)</u>	Total Activities		636
Pending Dec 31	74			

CRIMINAL CASE ACTIVITIES:	2003
Arraignment Call Days	100

FELONY DRUG COURT

On April 10, 2003, the Felony Drug Court of Summit County completed its first year in session. Felony Drug Court is made possible through a federal grant administered by the Alcohol, Drug Addiction & Mental Health Services (ADM) Board. It is a coordinated and cooperative effort utilizing treatment agencies, law enforcement and the Prosecutor's office. Our aim is to take non-violent, substance abusing offenders who cycle through the judicial system due to lack of intervention measures and provide the sanctions and services necessary to change their deviant behavior. Drug Court provides early intervention, intense supervision and treatment. The purpose is to offer, then assist appropriate offenders in modifying/changing their behavior from reckless and irresponsible into responsible and productive members of their families and our community. The Drug Court team is motivated and very enthusiastic to ensure the success of this program.

Total Number Screened

Males	785
Females	213
Caucasian	444
African-American	554

Total Number Accepted

Males	36
Females	20
Caucasian	39
African-American	17

PRETRIAL RELEASE / SUPERVISION

RELEASE

Felonies screened through Akron Municipal Court M-F	2,001
Felonies screened through Akron Municipal Court Sat.	<u>395</u>
Total	2,396

Number of bond reviews done 332

Bonds modified at Magistrate arraignments 517

Inmates interviewed at the County Jail 1,743

Jail Time Credit reports done 204

SUPERVISION

Total number of active referrals 236

In-person interviews 578

Telephone contacts 257

Drugs screens done 257

 Negative results 155

 Positive results 102

Closed cases 107

 Successful closings 84

 Unsuccessful closings 23

Note: These figures are for the period from May to December 2003.

ADULT PROBATION DEPARTMENT

The caseload of the Adult Probation Department was 3,298 in 2003 compared to 3,140 in 2002. The number of new probation referrals to this department in 2003 was 2,390 compared with 2,079 in 2002. The number of presentence investigations increased from 1,144 in 2002 to 1,283 in 2003.

The computerization of all Court records continued during 2003 toward the refinement of the SCORS automated case management system which went on-line on January 2, 2003.

James Ward was hired as Interim Director of Offender Services/Chief Probation Officer replacing Lance Forsythe. Peter Hoose was later hired as Director of Offender Services/ Chief Probation Officer.

PERSONNEL ACTIVITY

The following personnel activity occurred during 2003:

Additions:	Separations:
James Ward	Julie Fuchs
Peter Hoose	
Jeff Cutler	

PROGRAMS

Please note that the Pretrial Release Activity Report has a new format this year. Also because of changes the operation of the Pretrial Release Division 2003 statistics are available only from May through December.

Pretrial Release

Bond Reviews Completed	2396
Felonies screened through Municipal Court	332
Bonds Modified at Magistrate Arraignment	517
Inmates Interviewed at the County Jail	1743
Jail Time Credit Reports Completed	204

Pretrial Supervision

Active Referrals	236
In-Person Interviews	578
Telephone Contacts	257
Drug Screens	257
Negative	155
Positive	102
Closings	107
Successful	84
Unsuccessful	23

Felony Drug Court

Total Screened	998
Total Accepted	56

Community Service/ Work Release/LEADS

The workload of this area has increase greatly with increased use of Community Service and the sharp increase in the number of requests for computerized criminal histories. The number of computerized case histories (LEADS requests) retrieved by the coordinator was 5,494 in 2002 and 4572 in 2003.

Intensive Supervision:

The Intensive Supervision Unit is supervising 378 individuals; as of December 31, 2003 and the referral rate remains steady, as has the staff.

The following statistical table includes referrals from all sources (i.e., court orders, transfers, probation violations, etc.) and summarizes the activity of this program during the past five years:

	2003	2002	2001	2000	1999
Referrals	300	314	345	363	274
Commitments	28	110	116	107	91
New Offenses	20	N/A	41	16	20
Technical Violation	58	N/A	67	67	63
Capiases	31	N/A	106	106	83
Successful Completion	118	204	194	141	163
Avg. Length of Supervision (in Months)	7.7	8.5	8.7	9.1	9.2

The caseloads of the Intensive Supervision Unit continue to exceed its annual projection of 200 referrals. The average length of supervision was 7.7 months in 2003 compared with 8.5 months in 2002.

Program Developments During 2003

Child Support Enforcement Team

There were 405 new indictments for felony Non Support in 2003 and the current pace will produce over 500 new indictments in 2004. This drastic increase in the number of Child Support cases and the programmatic reorganization in the Adult Probation Department have necessitated the disbanding of this specialized unit and the dispersal of these cases into the general population.

DUI Caseload

This program is exploring the use of the AlcAlert breath analyzer as a case management tool.

Job and Family Services (Welfare Fraud)

There were no major increases in the number of these cases in 2003.

Mental Health Team

The Mental Health Unit is continuing to connect with the treatment community through the participation in the Alcohol, Drug and Mental Health Board and the Probation and Treatment Advisory Board. Our working relationship with local treatment providers remains effective and open.

Sex Offender Unit

The Sex Offender Unit continues to cooperate with law enforcement and treatment agencies in order to develop a comprehensive strategy for managing sex offenders in the Summit County community. The Adult Probation Department is working with the Criminal Affairs Division of the Summit County Executive's Office to obtain a federal grant that could greatly enhance the capabilities and effectiveness of this unit.

The following tables summarize the activity of the Summit County Adult Probation Department. Please note that the activity of the Pretrial Release Unit for 2003 could not be summarized in the tables for prior years because of the changes in the activity structure that were made in 2003. The changes and activities are illustrated in the first chart under the program heading.

STATISTICAL SUMMARY FOR 2003

	<u>2003</u>	<u>2002</u>	<u>2001</u>	<u>2000</u>	<u>1999</u>
Total Caseload	3,298	3,140	3,238	3,594	3,580
New Probation Referrals					
Probation*(Includes CBCF Referrals)	2,114	1,891	1,710	1,470	1,643
Probation/CBCF*** (Included in Probation Referrals)	***(315)	***(149)	278	Incl.	Incl
Probation/Summit County Jail	0	0	0	0	0
Shock Probation	184	105	95	170	193
Treatment in Lieu of Conviction	78	80	55	36	37
Courtesy Supervision	14	0	0	0	0
Unsupervised Probation	00	0	0	0	0
Miscellaneous	00	0	0	0	0
Bond Supervision	00	3	0	0	3
TOTAL	2390	2,079	2,138	1,676	1,876

*Includes Intensive Supervision, Probation/Fine, and referrals for Work Release.

*** Included in the total

	<u>2003</u>	<u>2002</u>	<u>2001</u>	<u>2000</u>	<u>1999</u>
Felonies and Misdemeanors					
Felonies					
Males	1,574	1,405	1,269	1,013	1,146
Females	457	406	404	356	353
Undetermined	0	0	0	0	0
TOTAL	2,031	1,811	1,673	1,369	1,499
Misdemeanors					
Males	294	248	270	220	294
Females	67	48	74	87	81
Undetermined	0	2	0	0	1
TOTAL	359	298	344	307	376
Ages					
17 and under	2	2	1	3	8
18	88	96	109	89	96
19	122	123	132	113	125
20	104	102	131	90	109
21	95	115	94	90	95
22	76	89	71	71	73
23	104	98	57	52	72
24	89	84	73	54	65
25-30	441	389	382	318	337
31-35	372	303	293	219	270
36-40	316	260	267	234	273
41-50	463	358	265	265	271
51-65	110	89	67	71	69
66 & Over	8	1	9	7	12
Undetermined	0	0	0	0	1
TOTAL	2,390	2,079	1,951	1,676	1,876

Victim Impact Statements	489	639	676	469	587
Pretrial Release Program	**2003	2002	2001	2000	1999
Positive Recommendations	**	425	414	473	495
Released on Bond	**	103	88	67	80
Pretrial Release	**	303	289	309	330
Males Released	**	214	206	232	260
Females Released	**	89	83	77	70
No Shows	**	10	4	12	23
Drug Court	**	47	87	161	218
Work/Study Release Program	2003	2002	2001	2000	1999
Referrals	111	60	N/A	264	338
Release Granted	111	60	N/A	252	323
Release Denied	N/A	0	N/A	12	15
Completions	N/A	32	N/A	96	119
Violations	N/A	13	N/A	24	61
Other Closed Cases	N/A	0	N/A	0	16
Active Cases as of 12/31/03	N/A	15	N/A	132	32
Community Service Program					
Referrals	147	116	N/A	98	166
Placements*	N/A	116	N/A	99	163
Completions*	N/A	63	N/A	137	137
Violations	N/A	19	N/A	4	1
Other Closed Cases	N/A	*3	N/A	22	0
Active Cases as of 12/31/03	N/A	31	N/A	78	109

Figures for 2000 are estimated and reliable figures are unavailable for 2001 because of the absence of a Work Release Coordinator for the final six months of the 2000 and first eleven months of 2001.

* Medical terminations. **See Programs Section of the narrative.

Sealing of Record	2003	2002	2001	2000	1999
Granted	89	110	104	131	100
Withdrawn	10	10	9	10	6
Overruled	0	0	0	0	0
Dismissed	0	0	0	0	0
Denied	67	40	69	41	48
Filed in Error	0	0	0	0	0
Pending	99	97	357	227	229
TOTAL	265	257	439	409	383

Disposition of Presentence Investigations	<u>2003</u>	<u>2002</u>	<u>2001</u>	<u>2000</u>	<u>1999</u>
Probation	451	378	451	430	600
Probation/CBCF	315	229	278	236	Incl.
Probation/Summit County Jail	0	0	0	0	0
Work Release	Incl.	Incl.	Incl.	Incl.	Incl.
Department of Corrections	439	448	784	774	818
Reformatory for Women	Incl.	Incl.	161	143	153
Capias	0	0	32	38	0
Summit County Jail	0	0	45	54	40
Unsupervised Probation	0	0	0	0	0
Electric Chair	0	0	0	0	0
Pending	0	0	0	0	0
Miscellaneous	0	0	0	0	0
Intensive Supervision	78	89	108	106	81
TOTAL	1,283	1,144	1,859	1,781	1,692
Probation Finals/Terminations	<u>2003</u>	<u>2002</u>	<u>2001</u>	<u>2000</u>	<u>1999</u>
Terminations	403	394	453	442	413
Final.....	756	1440	886	693	571
Sentenced in Another Case	14	10	10	4	8
Deceased	0	0	0	0	0
Other	16	42	9	22	9
Treatment in Lieu of Conviction	39	48	23	24	24
TOTAL	1,228	1,934	1,383	1,185	1,025
Sentencing					
Department of Corrections	799	895	784	774	818
Ohio State Reformatory for Women	121	148	161	143	153
Summit County Jail	51	54	45	54	40
TOTAL	971	1,097	990	971	1,011
Sentenced In					
Probation Violation	555	564	476	477	515
Capiases	0	3	1	1	0
Presentence Investigation	439	519	549	543	552
Treatment in Lieu of Conviction	8	6	7	2	2
Victim Impact Statement Only	2	7	3	0	1
TOTAL	1,004	1,099	1,036	1,023	1,070

PSYCHO-DIAGNOSTIC CLINIC

Psycho-Diagnostic Clinic is the certified forensic center providing psychological evaluations, courtroom testimony and consultation to the Common Pleas (Criminal) Courts of Summit, Stark, Portage, Medina and Geauga Counties. The Clinic also provides these services to Summit County Domestic Relations Court and to Municipal Courts in Summit County. Evaluations are occasionally provided to other courts on a fee-for-service basis. The Clinic is funded by the Ohio Department of Mental Health, the Summit County General Fund, and the County of Summit Alcohol, Drug Addiction and Mental Health Services Board.

Psycho-Diagnostic Clinic is directed by a clinical psychologist board certified in forensic psychology, and staffed by a full-time clinical psychologist, full-time social worker, and consulting psychologists and psychiatrist. The Clinic examiners are listed in Table 1.

COURT-ORDERED EVALUATIONS

The Clinic conducted 453 court-ordered evaluations in 2003. Sixty-eight percent (68%) of these evaluations were provided for Summit County Common Pleas Court. Fifteen percent (15%) of these evaluations were ordered by Stark, Medina, Portage and Geauga County Common Pleas Courts, which the Ohio Department of Mental Health funds the Clinic to serve. Thirteen percent (13%) of Clinic evaluations were completed for Municipal and Domestic Relations Courts in Summit County, through mental health funding. Four percent (4%) of the evaluations were completed for other courts the Clinic serves on a fee-for-service basis. Clinic referrals by referral source over the past seven years are summarized in Table 2.

Table 3 contains a breakdown of referrals to the Clinic by referral issue over the past seven years. The primary referral issues the Clinic is ordered to address are competency to stand trial (37% of referrals), sanity at the time of the act (17% of referrals), and intervention in lieu of conviction (30% of referrals). Psycho-Diagnostic Clinic also conducts evaluations of defendants found not guilty by reason of insanity or incompetent to stand trial-nonrestorable (6% of referrals), and mitigation of penalty or post-sentence evaluations (7% of referrals). Evaluations regarding sexual offender classification (1% of referrals), and evaluations of indigent families for Domestic Relations Court (2% of referrals) are provided on a less frequent basis.

CONDITIONAL RELEASE MONITORING

In 1985, Psycho-Diagnostic Clinic developed a monitoring program for Summit County Common Pleas Court to follow defendants found Not Guilty by Reason of Insanity who were committed to community mental health treatment on conditional release status. This monitoring program has attempted to ensure that these individuals are provided appropriate treatment and that, if their adjustment in the community deteriorates, they are readily hospitalized.

Information on the number of individuals monitored on conditional release commitment under the jurisdiction of Summit County Common Pleas Court over the past seven years is presented in Table 4. In 2003, the Clinic monitored a total of 56 individuals committed to conditional release by the court. Twelve individuals were newly committed to treatment in the community on conditional release. Six individuals were discharged from conditional release commitment. Three of these 56 clients required revocation of conditional release and hospitalization. Psycho-Diagnostic Clinic attempts to work closely with Community Support Services in Summit County to increase the likelihood that conditional release clients and mentally ill probationers receive the services they need to make a successful community adjustment.

RESEARCH AND TRAINING.

The Clinic continued to collaborate in research and training activities with the Kent State University Department of Psychology, the Ohio Department of Mental Health, the Northeastern Ohio Universities College of Medicine (NEOUCOM) and the Louis Stokes Veterans Affairs Medical Center in 2003. Four doctoral students from the American Psychological Association (APA)-approved training program in clinical psychology at Kent State University served placements at Psycho-Diagnostic Clinic. Four psychiatry residents from the Northeastern Ohio Universities College of Medicine Psychiatry Residency program served forensic rotations at the Clinic as part of their training.

The results of research based on the Psycho-Diagnostic Clinic database continue to be published in refereed journals and presented at professional meetings. This research is not funded by Psycho-Diagnostic Clinic.

PUBLICATIONS

Delain, S.L., Stafford, K.P. & Ben-Porath, Y.S. (2003). Use of the TOMM in a criminal court forensic assessment setting. Assessment, 10(4), 370-381.

Petroskey, L.J., Ben-Porath, Y.S. & Stafford, K.P. (2003). Correlates of the Minnesota Multiphasic Personality Inventory-2 (MMPI-2) Personality Psychopathology Five (PSY-5) scales in a forensic assessment setting. Assessment, 10(4), 393-399.

Stafford, K.P. (2003). Assessment of competence to stand trial. In I. Weiner & A. Goldstein (Eds.): Handbook of Psychology. Volume 11 Forensic Psychology. Hoboken: John Wiley & Sons.

TABLE I

PSYCHO-DIAGNOSTIC CLINICAL STAFF AND CONSULTANTS

Kathleen P. Stafford, Director
<p>Ph.D., Clinical Psychology, Kent State University Certified in forensic psychology, American Board of Professional Psychology (ABPP) Past President, American Board of Forensic Psychology Past Chair, Ethics Committee, American Psychological Association Specialty in evaluation of competencies and criminal responsibility, assessment and treatment of high-risk clients, and standards of practice</p>
Yossef S. Ben-Porath
<p>Ph.D., Clinical Psychology, University of Minnesota Clinical Training Director, Kent State University Specialty in forensic evaluations and research on MMPI and other measures of psychopathology</p>
Jody Pickle
<p>Ph.D., Clinical Psychology, Kent State University Specialty in neurocognitive assessment and research on substance-related aggression</p>
Gary N. Sales
<p>M.D., Wright State University School of Medicine Board certified in Adult and Forensic Psychiatry J.D., Ohio State University School of Law</p>
Thomas W. Hall
<p>Ph.D., Clinical Psychology, Yale University Specialty in forensic assessment and child custody and visitation evaluations</p>
Steven Neuhaus
<p>Ph.D., Clinical Psychology, St. Louis University Specialty in child, adolescent and family evaluations and treatment</p>
Marianne K. Wohl
<p>Ph.D., Psychology, Tulane University Postdoctoral Fellowship, John F. Kennedy Institute, Johns Hopkins University School of Medicine Specialty in mental retardation/developmental disabilities</p>
Tamara H. Wolf
<p>Ph.D., Clinical Psychology, Arizona State University Postdoctoral Forensic Psychology Fellowship, St. Louis (MO) Psychiatric Rehabilitation Center</p>

TABLE 2
PSYCHO-DIAGNOSTIC CLINIC
REFERRALS BY SOURCE AND YEAR

REFERRAL SOURCE	2003	2002	2001	2000	1999	1998	1997
Summit Common Pleas Court	307	260	284	255	225	217	217
Stark Common Pleas Court	40	65	44	45	37	48	27
Medina Common Pleas Court	20	30	14	17	16	17	18
Portage Common Pleas Court	8	6	5	11	12	5	5
Geauga Common Pleas Court	2	2	1	2	0	5	8
Summit County Domestic Relations	11	6	22	17	22	7	11
Akron Municipal Court	40	39	37	35	58	45	41
Cuyahoga Falls Municipal Court	5	6	11	9	11	5	4
Barberton Municipal Court	3	5	1	2	3	3	5
Medina County Municipal Court	15	6	11	15	16	17	10
Stark County Municipal Courts	1	0	4	2	6	0	6
Portage County Municipal Court	0	1	0	1	9	8	7
Summit County Adult Probation	0	2	3	2	5	8	10
Other Courts	*1	0	*1	*1	0	5	1
TOTAL	453	428	438	414	420	390	370

* Juvenile Courts

TABLE 3
REFERRALS BY TYPE AND YEAR

REFERRAL TYPE	2003	2002	2001	2000	1999	1998	1997
Competency to Stand Trial ORC Section 2945.371(G)(3)	167	174	160	154	189	166	150
Not Guilty by Reason of Insanity ORC Section 2945.37 (G)(4)	74	74	65	70	69	73	79
Intervention in Lieu of Conviction ORC Section 2951.041	135	106	120	75	52	49	58
Mitigation of Penalty ORC Section 2947.06	13	15	20	46	35	32	18
Post Sentence ORC Section 2967.22	20	17	12	24	19	20	24
Non Secured Status ORC Section 2945.401	14	21	21	13	22	28	14
Incompetent – Nonrestorable ORC 2945.39(A)(2)	2	2	-	-	-	-	-
Commitment-NGRI ORC Section 2945.40	12	7	17	12	10	8	11
Domestic Relations	11	6	22	17	22	7	11
Sexual Classifications	5	6	1	3	2	4	5
TOTALS	453	428	438	414	420	387	370

TABLE 4
CONDITIONAL RELEASE MONITORING

CLIENTS	2003	2002	2001	2000	1999	1998	1997
Monitored	56	45	48	43	41	32	27
New Commitments	12	10	10	10	15	7	8
Discharges	6	8	7	4	3	2	3
Revocations	3	4	1	3	6	2	1
Death	-	1	-	1	-	-	-

JURY MANAGEMENT

Each year, on the first working Monday of September, the Summit County Court of Common Pleas Jury Commissioners perform the annual jury draw. Potential jurors are selected from the voter registration list as certified by the Board of Elections from the preceding general election. The annual draw is performed pursuant to O.R.C. section 2313.06 et seq. Prior to performing the draw, the Presiding Judge designates by order, the number of jurors to be summoned for each court jurisdiction in Summit County, that being Common Pleas Court and Akron, Barberton and Cuyahoga Falls Municipal Courts. Furthermore, the Jury Commissioners also draw jurors for Grand Jury pursuant to O.R.C. section 2313.06 et seq.

From the annual jury list, jurors are drawn for each of the four-month sessions of court within the jury year pursuant to O.R.C. 2313.19 et seq. The sessions commence on the first working Monday of September, January and May. The Jury Commissioners, in the presence of the Presiding Judge, the Sheriff and the Clerk of Courts draw the number of jurors previously designated for that session by the Presiding Judge. Upon completion and recording of the session jury lists, the jurors are summoned, using a one-step summons and questionnaire.

Jurors who receive summonses are asked to return the questionnaire portion providing a certain amount of information. The questionnaire also provides jurors with an opportunity to notify the court that they are eligible for an exemption pursuant to O.R.C. 2313.12. Any person eligible for an exemption may waive that exemption. Depending on information provided by the jurors, they may also be excused for a limited number of reasons pursuant to O.R.C. section 2313.16. The Jury Commissioners are solely responsible for determining which jurors' exemptions are valid and which jurors may be excused.

Beginning October 28, 2002, jurors for Common Pleas and Akron Municipal Court service, received an informational brochure included with their summons. This brochure helps to answer many of the commonly asked questions by jurors prior to beginning their service such as how they are chosen, where to park, jury fees, what to wear, etc.

Jurors selected for Grand Jury were required to serve a four-month term. Beginning May 4, 1999, the Grand Jury was reduced to a two-month session to ease the burden on people called and to get more county residents involved in the justice system. The process for selecting the Grand Jury from the pool of jurors summoned for each session is governed by Crim.R. 6. Once the Grand Jury is selected, those jurors now serve for two months.

Beginning September 14, 1998, the term of service for petit jurors was reduced from two weeks to one week or one trial. This was done in order to make jury service less of a hardship and to increase participation due to the recent changes to legislation governing excuses and exemptions. For the 2003-2004 jury year, 40,000 jurors were drawn for Summit County, 10,000 for Akron Municipal Court, and 5,000 each for Barberton and Cuyahoga Falls Municipal Courts. These jurors are then divided equally between the three sessions of court and summoned to one week of service within the four-month session to which they were selected.

Petit jurors are paid \$20.00 per day for the first ten days of actual service. Jurors who serve more than ten days are paid \$30.00 per day for each subsequent day. Increase of juror fees became effective March 6, 2000.

Year	Total Paid	Total Jurors	Average Days	Muni Court Days	Reimbursed By Muni Cts
1999	\$286,740	13,154	2.18	2,513	\$26,895
2000	\$340,321	12,586	2.73	2,362	\$38,420
2001	\$374,828	13,407	2.79	2,358	\$34,589
2002	\$387,538	13,279	2.92	2,693	\$48,654
2003	\$366,422	13,202	2.78	2,359	\$30,058

Municipal Court dollars represents the amount actually paid as reimbursements for jury fees. The difference between billed and paid is the result of state code violations tried in Municipal Court and for which they do not reimburse jury fees pursuant to ORC 1901.25

COUNTY of SUMMIT COURTHOUSE SECURITY

In the year 2003, the Sheriff's Court and Special Services Bureau had the responsibility of providing security and prisoner transport for the Summit County Court of Common Pleas. The tables below provide a statistical overview and comparison of the Security Surveillance Stations, Incident Reporting and Prisoner Transportation.

Security Surveillance Stations

	2000	2001	2002	2003
Firearms *	28	15	3	4
Edged or Sharp Items	2,210	2,859	3,148	2,697
Chemical	572	385	243	301
Drug Paraphernalia	0	3	0	0
Miscellaneous**	548	670	417	356
TOTAL	3,358	3,932	3,811	3,358

* Firearms belonging to off duty law enforcement officers who are in the Courthouse for personal business.

** Miscellaneous category includes items that are not illegal, but are inappropriate to be carried into the Courthouse.

Courthouse Incident Reporting Overview

	2000	2001	2002	2003
Assaults	2	1	5	6
Theft & Bad Checks	1	2	6	6
Disorderly Conduct	5	4	7	5
Injury / Illness	17	15	32	35
Lost / Found Property	6	11	7	8
Escape Attempts	0	0	0	102
Contraband Incidents	0	0	0	0
Alarm Activation	23	3	1	9
Arrests	20	15	9	3
Miscellaneous*	0	20	37	38
Domestic Ct Incident**	893	1,083	2,944	735
Domestic Ct Incident***	N/A	N/A	N/A	15

* Miscellaneous Incident Reports: i.e. Vehicle Accident, Telephone Harassment, and Damage to Property

** Domestic Court Incident Argument/Threats inside and outside court

*** Domestic Court C.P.O. (New Entry)

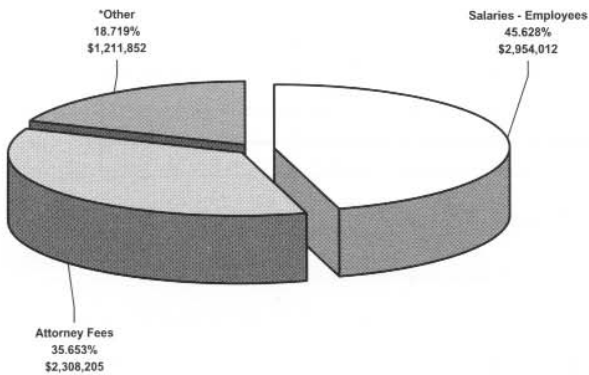
Prisoner Transportation by Court Order

	2000	2001	2002	2003
To Correctional Institutions	1,908	1,946	1,852	1,725
From Correctional Institutions	556	359	591	437
Common Pleas Court	6,974	6,803	8,236	8,834
Other Destinations*	1,542	2,596	2,038	3,889
TOTAL	10,980	11,704	12,717	14,885

* Other destinations including IBH, Oriana, CBCF, Municipal Court, Funeral Visitation, Polygraph Examinations, Psychiatric Facilities, or other destination that the Court may order.

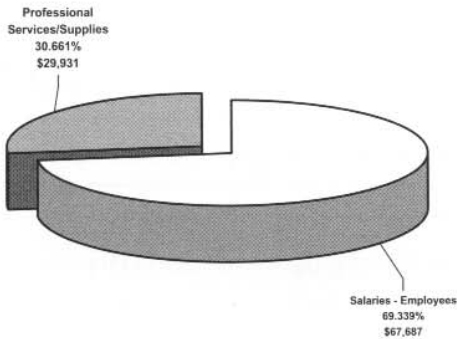
2003 OPERATING EXPENDITURES

COURT ADMINISTRATION

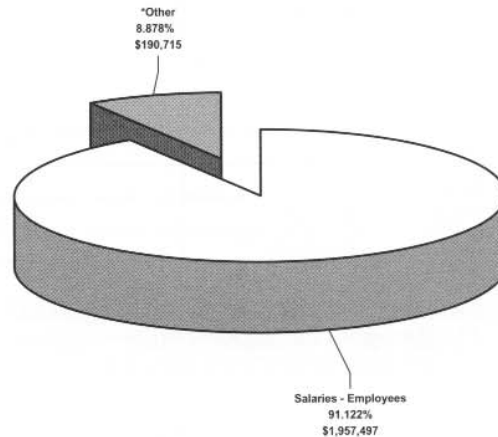


*Other		
Salaries-Officials	\$109,552	1.692%
Salaries Security	293,396	4.532%
Professional Services		
Transcripts	142,524	2.201%
Visiting Judges	20,187	0.312%
Arbitrator Fees	22,970	0.355%
Supplies	42,449	0.656%
Travel	17,646	0.273%
Contract Repair	44,974	0.695%
Other Expenses	62,165	0.960%
Jury Maintenance	11,963	0.185%
Witness Fees	3,780	0.058%
Juror Fees	366,422	5.660%
Equipment	7,371	0.114%
Witness Fees (G.J.)	3,912	0.060%
Juror Fees (G.J.)	62,541	0.966%
TOTAL	\$1,211,852	18.719%

PSYCHO-DIAGNOSTIC CLINIC



ADULT PROBATION DEPARTMENT



*Other		
Salaries-Security	\$136,212	6.341%
Supplies	\$13,447	0.626%
Travel	\$3,168	0.147%
Motor Vehicle Fuel/Repair	\$5,202	0.242%
Contract Repairs	\$13,451	0.626%
Other Expenses	\$19,234	0.895%
TOTAL	\$190,715	8.878%

COURT OF COMMON PLEAS

GENERAL FUND EXPENDITURES

() Indicates No. of Employees

	2000	2001	2002	2003
Court Administration				
Official Salaries	\$112,000	\$112,000	\$112,000	\$109,552
Employee Salaries	(68) 2,468,266	(69) 2,575,877	(70) 2,649,052	(72) 2,954,012
Security Salaries	278,538	286,227	292,651	293,396
Transcripts	115,913	92,017	134,315	142,524
Visiting Judges	10,252	8,404	15,275	20,187
Attorney Fees	2,217,748	2,112,611	2,257,565	2,308,205
Arbitrator Fees	76,680	47,850	35,045	22,970
Supplies	39,918	60,909	37,029	42,449
Travel	21,799	32,040	24,194	17,646
Contract Repairs	21,715	24,970	18,503	44,974
Other Expenses	83,321	88,564	85,504	62,165
Jury Maintenance	13,742	18,864	17,416	11,963
Witness Fees	646	418	1,040	3,780
Juror Fees	340,321	374,828	387,538	366,422
Equipment	20,935	136,665	98,276	7,371
Witness Fees (G.J.)	5,941	4,032	4,861	3,912
Juror Fees (G.J.)	52,061	64,255	66,255	62,541
	<u>52,061</u>	<u>64,255</u>	<u>66,255</u>	<u>62,541</u>
Subtotal Administration	\$5,879,796	\$6,040,531	\$6,236,519	\$6,474,069
Adult Probation				
Adult Probation Salaries	(55) \$1,580,279	(53) \$1,571,657	(53) \$1,721,637	(54) \$1,957,497
Security Salaries	\$115,644	122,669	126,355	136,212
Supplies	21,000	16,109	22,206	13,447
Travel	3,980	5,850	4,670	3,168
Motor Vehicle Fuel/Repair	6,500	5,200	6,500	5,202
Contract Repairs	14,000	12,582	12,810	13,451
Other Expenses	24,247	25,989	27,427	19,234
	<u>24,247</u>	<u>25,989</u>	<u>27,427</u>	<u>19,234</u>
Subtotal Adult Probation	\$1,765,650	\$1,760,056	\$1,921,605	\$2,148,211
Psycho-Diagnostic Clinic				
Salaries	(2) \$54,874	(2) \$65,895	(2) \$65,367	(2) \$67,687
Supplies				\$5,000
Professional Services	41,371	26,523	24,864	24,931
	<u>41,371</u>	<u>26,523</u>	<u>24,864</u>	<u>24,931</u>
Subtotal Psycho-Diagnostic	\$96,245	\$92,418	\$90,231	\$97,618
TOTAL COMMON PLEAS CT	(125) <u>\$7,741,691</u>	(124) <u>\$7,893,005</u>	(125) <u>\$8,248,355</u>	(128) <u>\$8,719,898</u>

**Summit County Court of Common Pleas
General Division
209 South High Street
Akron, Ohio 44308**